

TO: All Weil-McLain Distributors and Agents

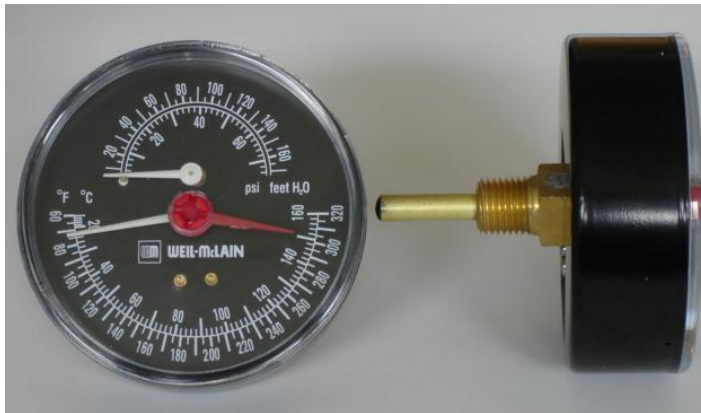
FROM: Mike Boyd – Product Marketing Manager

SUBJECT: **New Residential Pressure/Temperature Gauge**

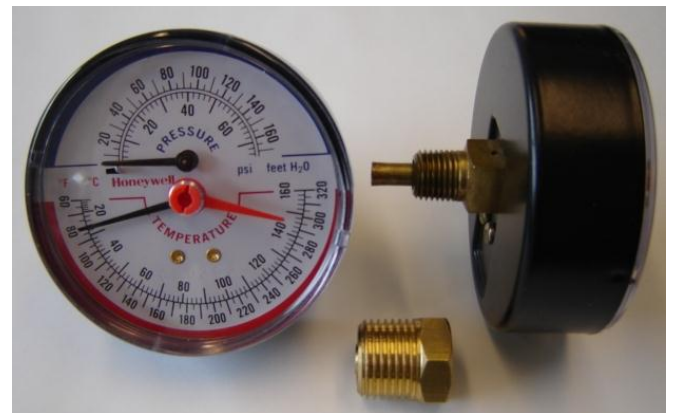


Weil-McLain is switching over to a new combination pressure/temperature gauge on select residential boiler models. The change is easy to identify because the new gauge has a black face and has our Weil-McLain logo on it, the face on the old gauge is white and says "Honeywell".

We started to include the new Weil-McLain black-faced gauge with the CG residential gas boilers last week. We expect to start including them with the WGO & WTGO residential oil boilers and GV residential gas boilers within the next two weeks.



New WM Gauge # 380-000-000



Old Honeywell Gauge # 510-218-047

The new WM black-faced gauge, **service part # 380-000-000**, **replaces** the following gauges: **# 510-218-047** on the GV, CGs, CGi, CGa, CGt gas boilers and **# 510-218-099** and **# 510-218-048** on the WGO & WTGO oil boilers.

When the new WM T&P gauge is used to replace part # 510-218-047 and # 510-218-048, the brass self-sealing well must be removed from the piping and replaced with a 1/2" x 1/4" black iron bushing (included with the new service part kit). Installing the new gauge in the existing brass self-sealing well will damage both the well and the gauge.

Please be advised... that the old Honeywell gauge is in a use-up situation, so you could see a mix of these, for a short period of time, as they ship with boilers from our Eden assembly plant.

If you have any questions, please contact Weil-McLain Technical Services at (219) 879-6561. For all other inquiries, please contact your Weil-McLain sales representative or area sales office.