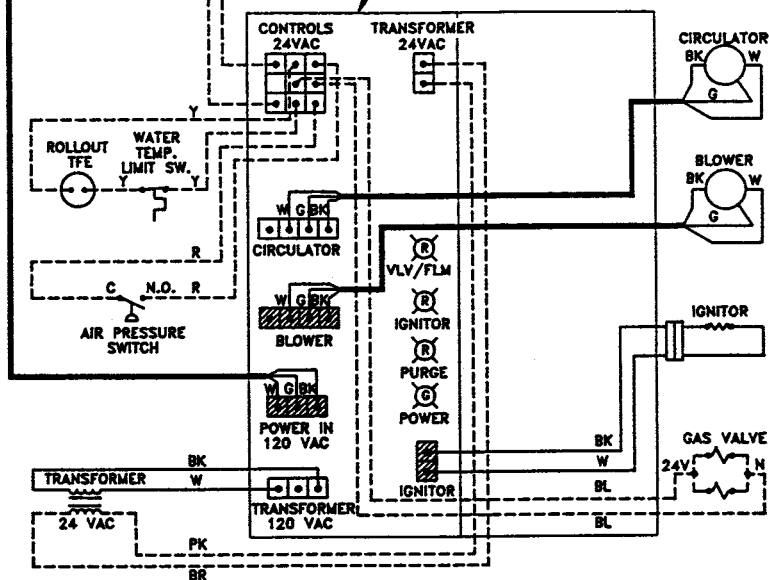


## SCHEMATIC WIRING

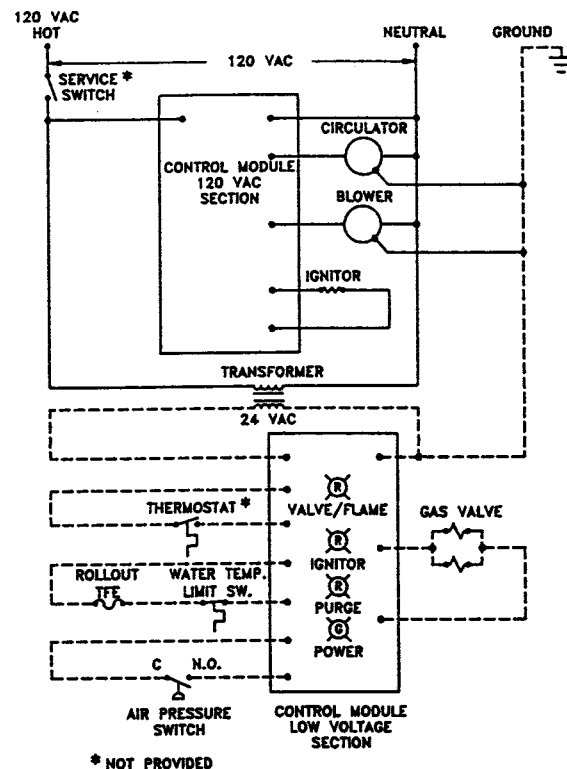
▨ = RED CONNECTOR    ◻ = WHITE CONNECTOR

HIGH VOLTAGE FACTORY WIRING  
LOW VOLTAGE FACTORY WIRING  
HIGH VOLTAGE FIELD WIRING  
LOW VOLTAGE FIELD WIRING

CONNECTOR AND STATUS LIGHT  
LOCATIONS/ORIENTATIONS MAY VARY



## LADDER WIRING



NOTICE - ALL CONTACTS SHOWN WITHOUT POWER  
APPLIED - OFF SHELF CONDITION.

## WARNING

ELECTRICAL SHOCK HAZARD, CAN CAUSE SEVERE INJURY OR DEATH. DISCONNECT POWER BEFORE INSTALLING AND/OR SERVICING.

### NOTES:

1. ALL WIRING MUST BE INSTALLED IN ACCORDANCE WITH:
  - a. U.S.A. - N.E.C. AND ANY OTHER NATIONAL, STATE, OR LOCAL CODE REQUIREMENTS HAVING JURISDICTION.
  - b. CANADA - C.S.A., C22.1 C.E.C. PART 1 AND ANY OTHER NATIONAL, PROVINCIAL, OR LOCAL CODE REQUIREMENTS HAVING JURISDICTION.
2. ALL SAFETY CIRCUIT WIRING MUST BE:
  - a. U.S.A. - N.E.C. CLASS 1.
  - b. CANADA - C.S.A. C22.1 C.E.C. PART 1.
3. THERMOSTAT ANTICIPATOR SETTING (SINGLE ZONE):  
SEE LABEL ON CONTROL MODULE.
3. IF ORIGINAL ROLLOUT TFE WIRE AS SUPPLIED WITH THE APPLIANCE MUST BE REPLACED, TYPE 200°C WIRE OR ITS EQUIVALENT MUST BE USED.  
IF ANY OTHER ORIGINAL WIRE AS SUPPLIED WITH THE APPLIANCE MUST BE REPLACED, TYPE 90°C WIRE OR ITS EQUIVALENT MUST BE USED.
5. FOR MULTIPLE ZONING USE EITHER ZONE VALVES OR CIRCULATORS.  
REFER TO THE COMPONENT MANUFACTURER'S INSTRUCTIONS FOR APPLICATION AND WIRING.
6. REFER TO CONTROL COMPONENT INSTRUCTIONS PACKED WITH THE BOILER FOR APPLICATION INFORMATION.

WIRING DIAGRAM FOR HE II (SERIES 1)  
• INTEGRATED BOILER CONTROL SYSTEM  
• NATURAL OR PROPANE GAS BOILERS  
• FORCED HOT WATER



**WEIL-McLAIN**

A United Dominion Company

Weil-McLain • 500 Blaine St. • Michigan City, IN 46360-2388

PART NUMBER 550-224-053/0691WM