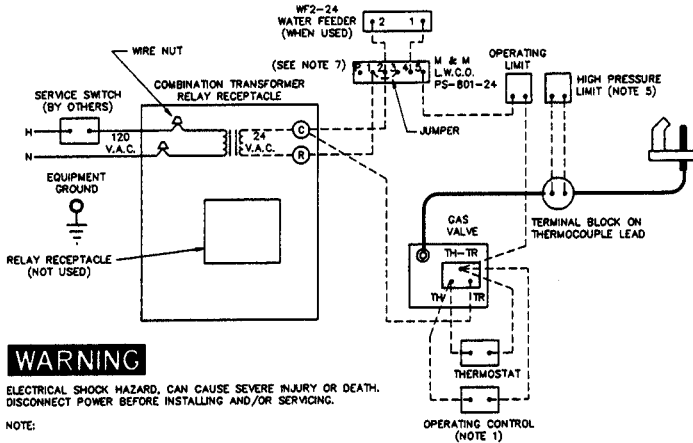


## SCHEMATIC WIRING DIAGRAM



### WARNING

ELECTRICAL SHOCK HAZARD, CAN CAUSE SEVERE INJURY OR DEATH. DISCONNECT POWER BEFORE INSTALLING AND/OR SERVICING.

#### NOTE:

1. FOR STEAM SYSTEM WITH TANKLESS HEATER.
2. ALL WIRING MUST BE INSTALLED IN ACCORDANCE WITH THE REQUIREMENTS OF THE NATIONAL ELECTRICAL CODE AND ANY ADDITIONAL STATE OR LOCAL CODE REQUIREMENTS HAVING JURISDICTION.
3. IF ANY OF THE ORIGINAL WIRE MUST BE REPLACED, USE 90°C THERMOPLASTIC OR EQUIVALENT.
4. REFER TO CONTROL COMPONENTS INSTRUCTION SHEETS PACKED WITH THE BOILER FOR APPLICATION INFORMATION.
5. THE HIGH PRESSURE LIMIT SHOULD BE SET AT MAXIMUM PRESSURE AND AT LEAST 2 PSI HIGHER THAN THE OPERATING PRESSURE CONTROL TO ELIMINATE NUISANCE PILOT OUTAGE.
6. ALL SAFETY CIRCUIT WIRING MUST BE N.E.C. CLASS 1.
7. TERMINAL "P" NOT USED. DO NOT WIRE INTO CIRCUIT.
8. SET THERMOSTAT ANTICIPATOR TO MATCH AMPERE DRAW OF GAS VALVE.

NOTICE - ALL CONTACTS SHOWN WITHOUT POWER APPLIED - OFF SHELF CONDITION.

HIGH VOLTAGE —————  
LOW VOLTAGE - - - - -

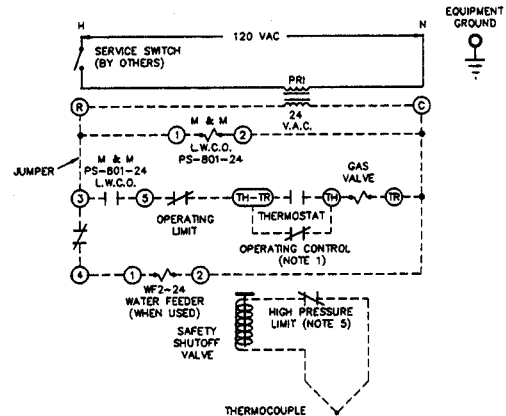
EG AND EGH STEAM BOILER SCHEMATIC AND LADDER WIRING DIAGRAMS—STANDING PILOT WITH 24V CONTROLS. APPLICABLE FOR EG-75, EGH-85, AND EGH-95 STEAM WITH McDONNELL AND MILLER PS-801-24 LOW WATER CUT-OFF WITH OR WITHOUT WF2-24 WATER FEEDER AND OPTIONAL INDIRECT HEATER.

**WEIL-McLAIN**

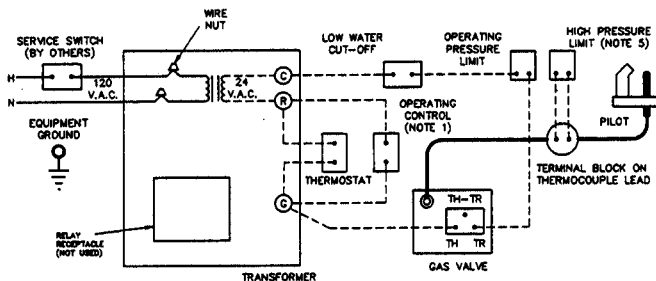
Michigan City, Indiana 46360  
A Marley Company

PART NO. 550224787/0889 WM

## LADDER WIRING DIAGRAM



## SCHEMATIC WIRING DIAGRAM



### WARNING

ELECTRICAL SHOCK HAZARD, CAN CAUSE SEVERE INJURY OR DEATH. DISCONNECT POWER BEFORE INSTALLING AND/OR SERVICING.

#### NOTES:

1. OPERATING CONTROL USED WITH STEAM BOILER EQUIPPED WITH TANKLESS HEATER ONLY.
2. ALL WIRING MUST BE INSTALLED IN ACCORDANCE WITH THE REQUIREMENTS OF THE NATIONAL ELECTRICAL CODE AND ANY ADDITIONAL NATIONAL, STATE, OR LOCAL CODE REQUIREMENTS HAVING JURISDICTION.
3. IF ANY OF THE ORIGINAL WIRE MUST BE REPLACED, USE 90°C THERMOPLASTIC OR EQUIVALENT.
4. REFER TO CONTROL COMPONENTS INSTRUCTION SHEETS PACKED WITH THE BOILER FOR APPLICATION INFORMATION.
5. THE HIGH PRESSURE LIMIT SHOULD BE SET AT A MAXIMUM PRESSURE AND AT LEAST 2 PSI HIGHER THAN THE OPERATING PRESSURE CONTROL TO ELIMINATE NUISANCE PILOT OUTAGE.
6. ALL SAFETY CIRCUIT WIRING MUST BE N.E.C. CLASS 1.
7. SET THERMOSTAT ANTICIPATOR TO MATCH AMPERE DRAW OF GAS VALVE.
8. EXCEEDING THE HIGH LIMIT SETTING WILL CAUSE PILOT OUTAGE WHICH WILL REQUIRE REIGHTING TO RESTORE OPERATION.

NOTICE - ALL CONTACTS SHOWN WITHOUT POWER APPLIED - OFF SHELF CONDITION.

HIGH VOLTAGE —————  
LOW VOLTAGE - - - - -

EG AND EGH BOILER SCHEMATIC AND LADDER WIRING DIAGRAMS. DUAL LIMIT CONTROLS, SINGLE SEAT GAS VALVE, 24 VOLT CONTROL SYSTEM, FLOAT TYPE LOW WATER CUT-OFF. APPLICABLE FOR EG-75, EGH-85 AND EGH-95 STEAM WITH OR WITHOUT TANKLESS HEATER.

**WEIL-McLAIN**

Michigan City, Indiana 46360  
A Marley Company

PART NUMBER 550-224-786/0889WM