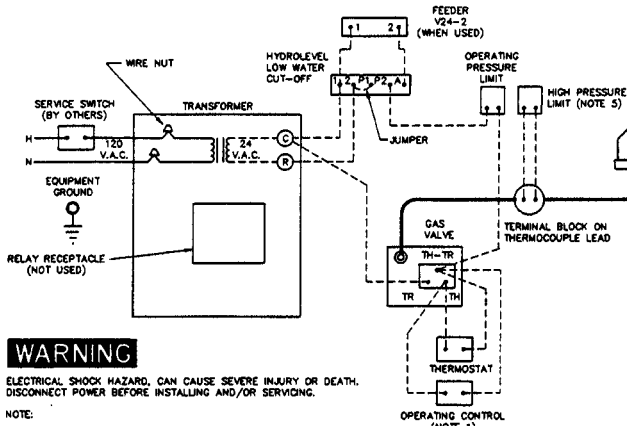


SCHEMATIC WIRING DIAGRAM



WARNING

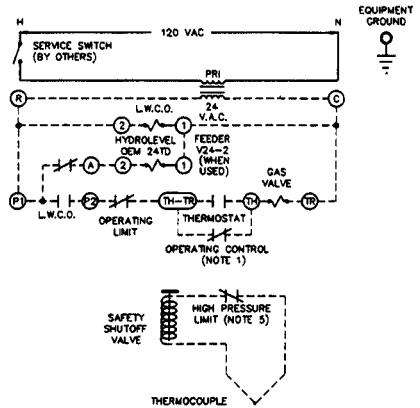
ELECTRICAL SHOCK HAZARD, CAN CAUSE SEVERE INJURY OR DEATH. DISCONNECT POWER BEFORE INSTALLING AND/OR SERVICING.

NOTE:

1. FOR STEAM SYSTEM WITH TANKLESS HEATER.
2. ALL WIRING MUST BE INSTALLED IN ACCORDANCE WITH THE REQUIREMENTS OF THE NATIONAL ELECTRICAL CODE AND ANY ADDITIONAL STATE OR LOCAL CODE REQUIREMENTS HAVING JURISDICTION.
3. IF ANY OF THE ORIGINAL WIRE MUST BE REPLACED, USE 90°C THERMOPLASTIC OR EQUIVALENT.
4. REFER TO CONTROL COMPONENTS INSTRUCTION SHEETS PACKED WITH THE BOILER FOR APPLICATION INFORMATION.
5. THE HIGH PRESSURE LIMIT SHOULD BE SET AT MAXIMUM PRESSURE AND AT LEAST 2 PSI HIGHER THAN THE OPERATING PRESSURE CONTROL TO ELIMINATE UNNECESSARY PILOT OUTAGE.
6. ALL SAFETY CIRCUIT WIRING MUST BE N.E.C. CLASS 1.
7. SET THERMOSTAT ANTICIPATOR TO MATCH AMPERE DRAW OF GAS VALVE.
8. EXCEEDING THE HIGH LIMIT SETTING WILL CAUSE PILOT OUTAGE WHICH WILL REQUIRE RELIGHTING TO RESTORE OPERATION.

NOTICE - ALL CONTACTS SHOWN WITHOUT POWER APPLIED - OFF SHELF CONDITION.

LADDER WIRING DIAGRAM



HIGH VOLTAGE _____
LOW VOLTAGE - - - - -

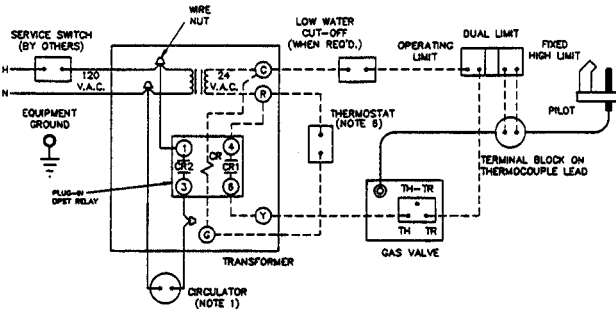
EC AND EGH BOILER SCHEMATIC AND LADDER WIRING DIAGRAMS. DUAL LIMIT CONTROLS, SINGLE SEAT GAS VALVE, 24 VOLT CONTROL SYSTEM, HYDROLEVEL LOW WATER CUT-OFF. APPLICABLE FOR EG-75, EGH-85 AND EGH-95 STEAM WITH OR WITHOUT TANKLESS HEATER.

WEIL-McLAIN

Michigan City, Indiana 46360
A Marley Company

PART NO. 550224789/0889 WM

SCHEMATIC WIRING DIAGRAM



WARNING

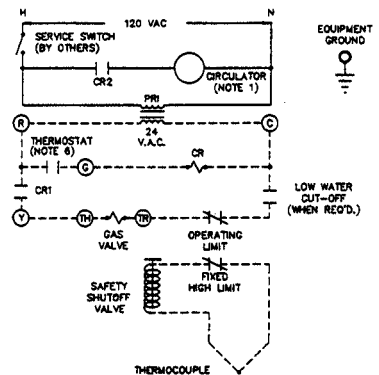
ELECTRICAL SHOCK HAZARD, CAN CAUSE SEVERE INJURY OR DEATH. DISCONNECT POWER BEFORE INSTALLING AND/OR SERVICING.

NOTES:

1. NOT REQUIRED WITH GRAVITY HOT WATER.
2. ALL WIRING MUST BE INSTALLED IN ACCORDANCE WITH THE REQUIREMENTS OF THE NATIONAL ELECTRICAL CODE AND ANY ADDITIONAL NATIONAL, STATE, OR LOCAL CODE REQUIREMENTS HAVING JURISDICTION.
3. ALL SAFETY CIRCUIT WIRING MUST BE N.E.C. CODE 1.
4. FOR MULTIPLE ZONING USING EITHER ZONE VALVES OR CIRCULATORS, REFER TO THE COMPONENT MANUFACTURER'S INSTRUCTIONS FOR APPLICATIONS AND WIRING.
5. IF ANY OF THE ORIGINAL WIRE AS SUPPLIED WITH THE APPLIANCE MUST BE REPLACED, IT MUST BE REPLACED WITH TYPE 90°C WIRE OR ITS EQUIVALENT.
6. THERMOSTAT HEAT ANTICIPATOR SETTING MUST BE 0.40 AMPS.

NOTICE - ALL CONTACTS SHOWN WITHOUT POWER APPLIED - OFF SHELF CONDITION.

LADDER WIRING DIAGRAM



HIGH VOLTAGE _____
LOW VOLTAGE - - - - -

EG, EGH, AND PFG BOILER SCHEMATIC AND LADDER WIRING DIAGRAMS. DUAL LIMIT CONTROLS, SINGLE SEAT GAS VALVE, 24 VOLT CONTROL SYSTEM, APPLICABLE FOR EG-75, EGH-85 AND EGH-95 FOR FORCED HOT WATER OR GRAVITY HOT WATER CIRCULATION AND PFG-5, PFG-6 AND PFG-7 BOILERS FOR FORCED HOT WATER CIRCULATION ONLY.

WEIL-McLAIN

Michigan City, Indiana 46360
A Marley Company

PART NUMBER 550-224-788/0889WM