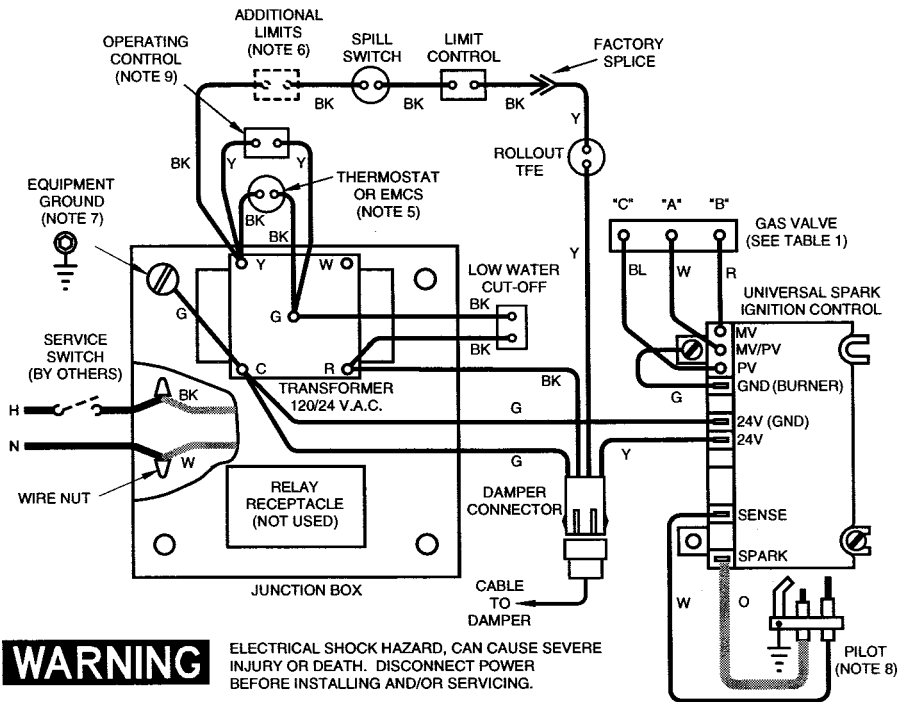


# SCHEMATIC WIRING DIAGRAM



- NOTES:**
- ALL WIRING MUST BE INSTALLED IN ACCORDANCE WITH:
    - U.S.A. - NATIONAL ELECTRICAL CODE AND ANY OTHER NATIONAL, STATE OR LOCAL CODE REQUIREMENTS.
    - CANADA - C.S.A. C22.1 CANADIAN ELECTRICAL CODE PART 1 AND ANY OTHER NATIONAL, PROVINCIAL OR LOCAL CODE REQUIREMENTS.
  - ALL CONTACTS SHOWN WITHOUT POWER APPLIED-OFF SHELF CONDITION.
  - IF ORIGINAL ROLL-OUT TFE WIRE AS SUPPLIED WITH THE APPLIANCE MUST BE REPLACED, TYPE 200°C WIRE OR ITS EQUIVALENT MUST BE USED. IF OTHER ORIGINAL WIRE AS SUPPLIED WITH THE APPLIANCE MUST BE REPLACED, TYPE 105°C OR ITS EQUIVALENT MUST BE USED.
  - REFER TO CONTROL COMPONENT INSTRUCTIONS PACKED WITH BOILER FOR APPLICATION INFORMATION.
  - THERMOSTAT - SET ANTICIPATOR TO MATCH AMPERE DRAW OF GAS VALVE PLUS VENT DAMPER.  
EMCS - FOR EMCS CONNECTION IN PLACE OF THERMOSTAT, REFER TO EMCS INSTALLATION/OPERATING MANUAL.
  - L.W.C.O., ADDITIONAL HIGH LIMIT, ETC., WIRED IN SERIES.
  - ⏏ DENOTES FIELD INSTALLED CHASSIS GROUND.
  - PILOT LEADWIRES ARE NOT FIELD REPLACEABLE. REPLACE PILOT ASSEMBLY IF NECESSARY.
  - OPERATING CONTROL REQUIRED WITH TANKLESS HEATER.

# LADDER WIRING DIAGRAM

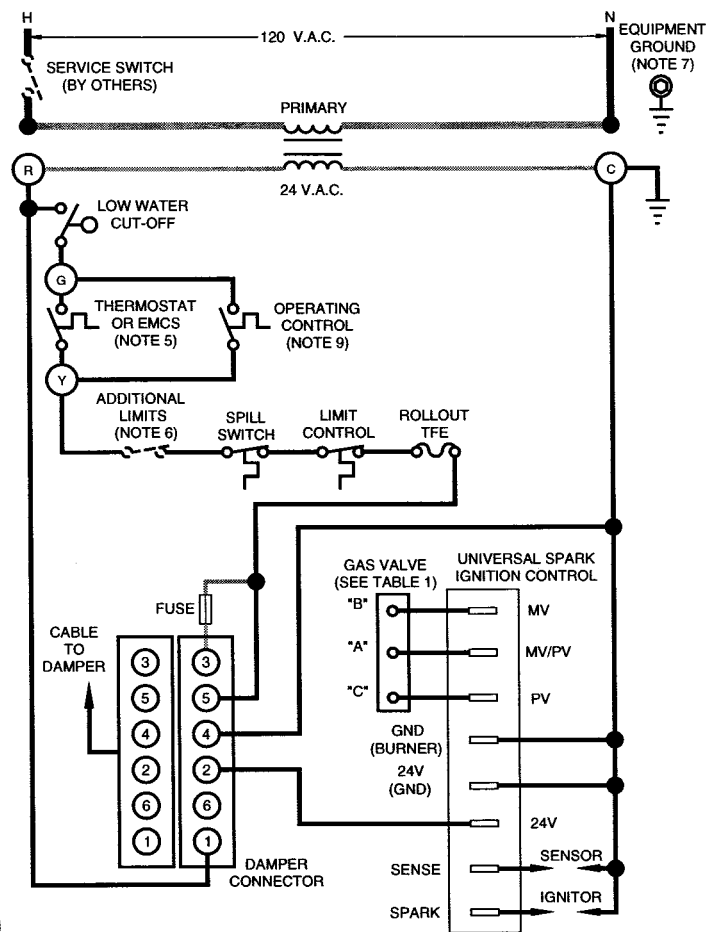


TABLE 1

GAS VALVE	"A"	"B"	"C"
HONEYWELL VR8204, VR8304	MV/PV	MV	PV
WHITE-RODGERS 36E	2	1	3
WHITE-RODGERS 36C	2-4*	1	3
ROBERTSHAW 7200	C	M	P

\* FACTORY JUMPERED

LOW VOLTAGE FIELD  
HIGH VOLTAGE FIELD  
LOW VOLTAGE FACTORY  
HIGH VOLTAGE FACTORY  
IGNITION CABLE

**EG**  
30 thru 75

- Intermittent Pilot
- Natural Gas
- Steam, With or Without Tankless
- Float-Type Low Water Cut Off

**WEIL-McLAIN**  
A United Dominion Company  
Weil-McLain • 500 Blaine St. • Michigan City, IN 46360-2388  
PART NUMBER **550-223-813/0196WM**