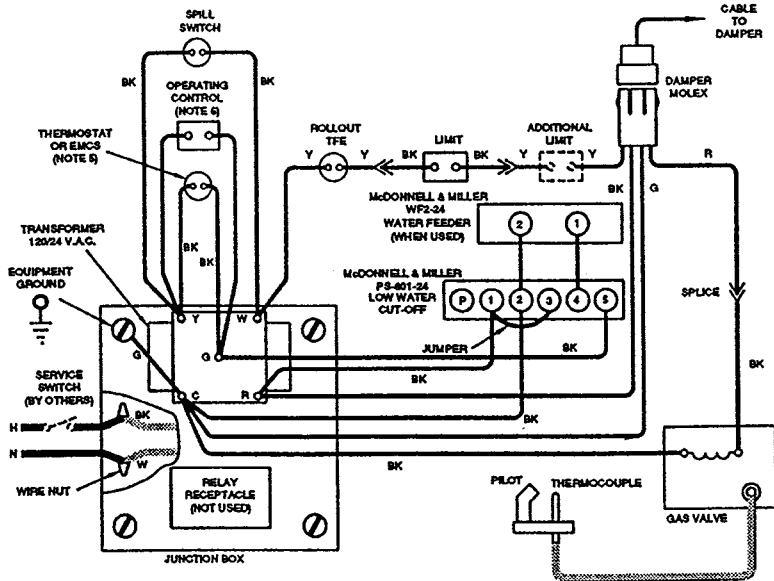
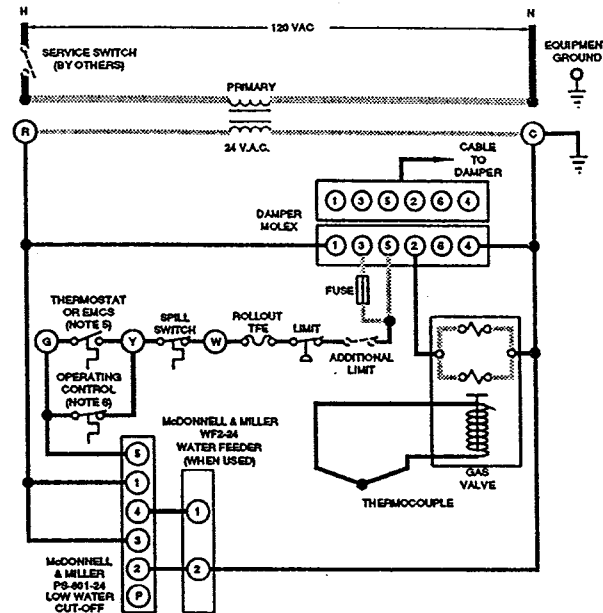


STEAM BOILER WITH McDONNELL & MILLER LOW WATER CUT OFF

SCHEMATIC WIRING DIAGRAM

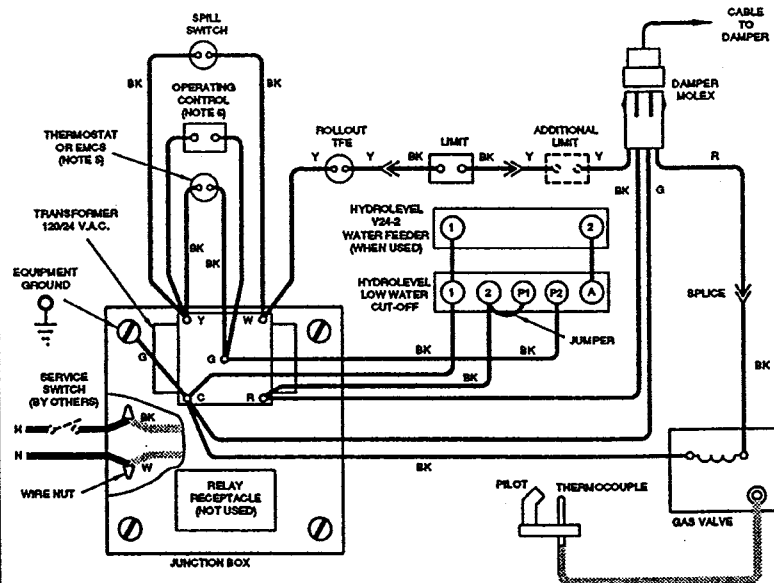


LADDER WIRING DIAGRAM

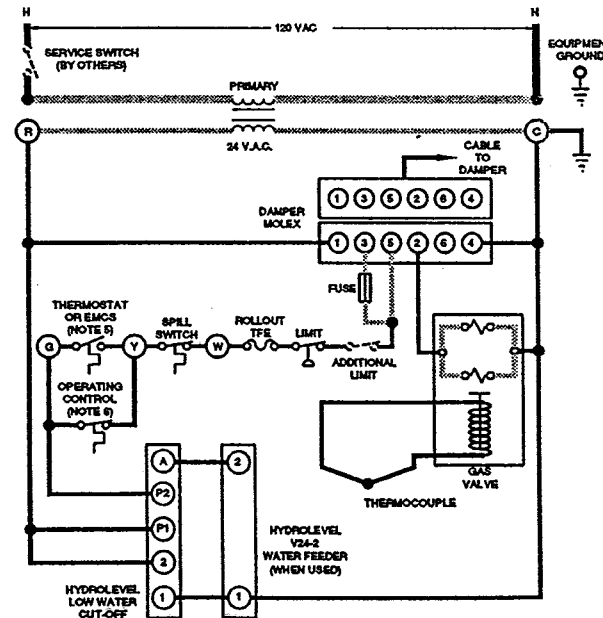


STEAM BOILER WITH HYDROLEVEL LOW WATER CUT OFF

SCHEMATIC WIRING DIAGRAM



LADDER WIRING DIAGRAM



EG

30 thru 65

- Standing Pilot, 24 Volt
- Redundant Gas Valve
- Steam, With or Without Tankless
- Probe Type Low Water Cut Off

NOTES

- ALL WIRING MUST BE INSTALLED IN ACCORDANCE WITH:
 - U.S.A. - NATIONAL ELECTRICAL CODE AND ANY OTHER NATIONAL, STATE OR LOCAL CODE REQUIREMENTS HAVING JURISDICTION.
 - CANADA - C.S.A. C22.1 CANADIAN ELECTRICAL CODE PART 1 AND ANY OTHER NATIONAL, PROVINCIAL OR LOCAL REQUIREMENTS HAVING JURISDICTION.
- ALL SAFETY CIRCUIT WIRING MUST BE:
 - U.S.A. - N.E.C. CLASS 1.
 - CANADA - C.S.A. C22.1 C.E.C. PART 1.
- IF ORIGINAL ROLLOUT TFE WIRE AS SUPPLIED WITH THE APPLIANCE MUST BE REPLACED, TYPE 200° C WIRE OR ITS EQUIVALENT MUST BE USED. IF OTHER ORIGINAL WIRE AS SUPPLIED WITH THE APPLIANCE MUST BE REPLACED, TYPE 105° C OR ITS EQUIVALENT MUST BE USED.
- REFER TO CONTROL COMPONENT INSTRUCTIONS PACKED WITH BOILER FOR APPLICATION INFORMATION.
- THERMOSTAT - SET ANTICIPATOR TO MATCH AMPERE DRAW OF GAS VALVE PLUS VENT DAMPER.
EMCS - FOR EMCS CONNECTION IN PLACE OF THERMOSTAT, REFER TO EMCS INSTALLATION/OPERATING MANUAL.
- OPERATING CONTROL REQUIRED WITH TANKLESS HEATER.

LOW VOLTAGE FIELD
HIGH VOLTAGE FIELD
LOW VOLTAGE FACTORY
HIGH VOLTAGE FACTORY
THERMOCOUPLE

WARNING ELECTRICAL SHOCK HAZARD CAN CAUSE SEVERE INJURY OR DEATH. DISCONNECT POWER BEFORE INSTALLING AND/OR SERVICING.

NOTICE - ALL CONTACTS SHOWN WITHOUT POWER APPLIED - OFF SHELF CONDITION.

WEIL-McLAIN

A Division of The Marley Company
Michigan City, Indiana 46360

PART NUMBER 550-223-019/1091WM