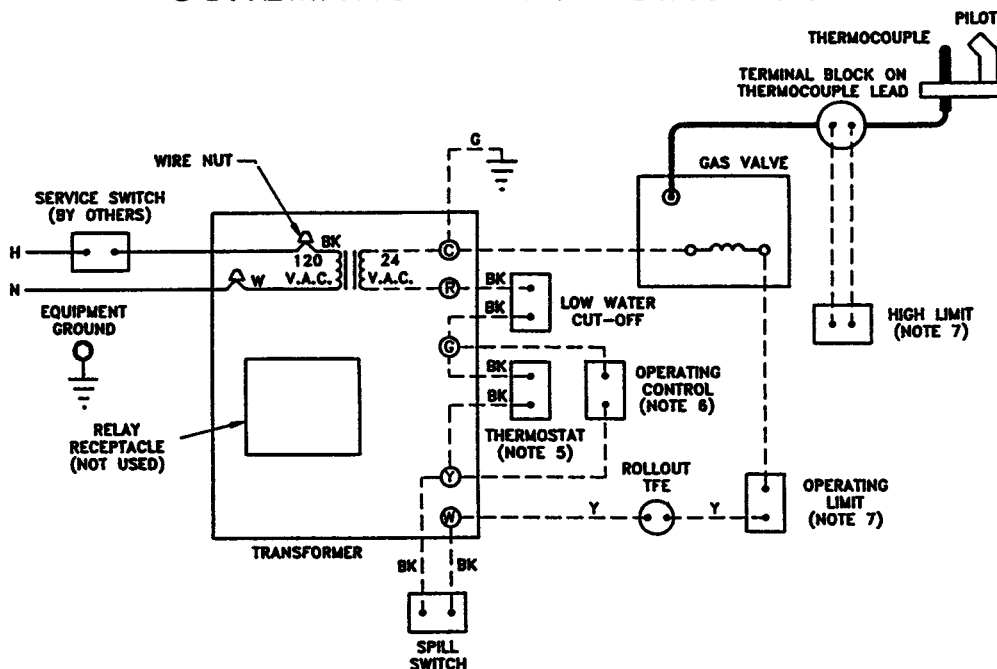


SCHEMATIC WIRING DIAGRAM



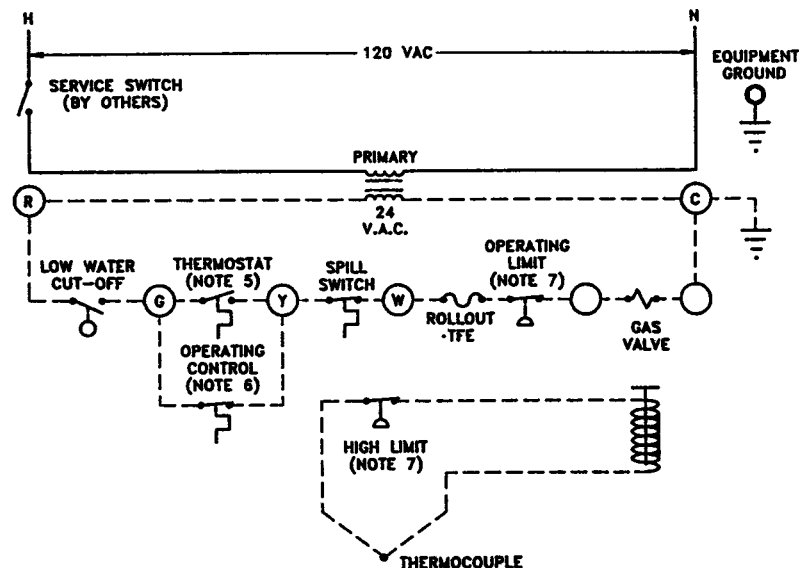
WARNING

ELECTRICAL SHOCK HAZARD, CAN CAUSE SEVERE INJURY OR DEATH. DISCONNECT POWER BEFORE INSTALLING AND/OR SERVICING.

NOTES:

- ALL WIRING MUST BE INSTALLED IN ACCORDANCE WITH:
 - U.S.A. - NATIONAL ELECTRICAL CODE AND ANY OTHER NATIONAL, STATE, OR LOCAL CODE REQUIREMENTS HAVING JURISDICTION.
 - CANADA - C.S.A. C22.1 CANADIAN ELECTRICAL CODE PART 1 AND ANY OTHER NATIONAL, PROVINCIAL, OR LOCAL CODE REQUIREMENTS HAVING JURISDICTION.
- ALL SAFETY CIRCUIT WIRING MUST BE:
 - U.S.A. - N.E.C. CLASS 1.
 - CANADA - C.S.A. C22.1 C.E.C. PART 1.
- IF ORIGINAL ROLLOUT TFE WIRE AS SUPPLIED WITH THE APPLIANCE MUST BE REPLACED, TYPE 200°C WIRE OR ITS EQUIVALENT MUST BE USED. IF OTHER ORIGINAL WIRE AS SUPPLIED WITH THE APPLIANCE MUST BE REPLACED, TYPE 90°C OR ITS EQUIVALENT MUST BE USED.
- REFER TO CONTROL COMPONENT INSTRUCTIONS PACKED WITH BOILER FOR APPLICATION INFORMATION.
- SET THERMOSTAT ANTICIPATOR SETTING TO MATCH AMPERE DRAW OF GAS VALVE.
- OPERATING CONTROL REQUIRED WITH TANKLESS HEATER.
- ADJUST HIGH LIMIT TO MAXIMUM SETTING. OPERATING LIMIT SHOULD BE ADJUSTED TO MINIMUM 2 PSI BELOW HIGH LIMIT TO ELIMINATE NUISANCE PILOT OUTAGE.

LADDER WIRING DIAGRAM



HIGH VOLTAGE —————
LOW VOLTAGE - - - - -

NOTICE - ALL CONTACTS SHOWN WITHOUT POWER APPLIED - OFF SHELF CONDITION.

Wiring Diagram for EG-75

- Standing Pilot, 24 Volt
- Single Seat Gas Valve w/2 Limit Controls
- Steam, With or Without Tankless
- Float-Type Low Water Cut-Off



WEIL-McLAIN

A United Dominion Company

Weil-McLain • 500 Blaine St. • Michigan City, IN 46360-2388

PART NUMBER 550-224-064/1290WM