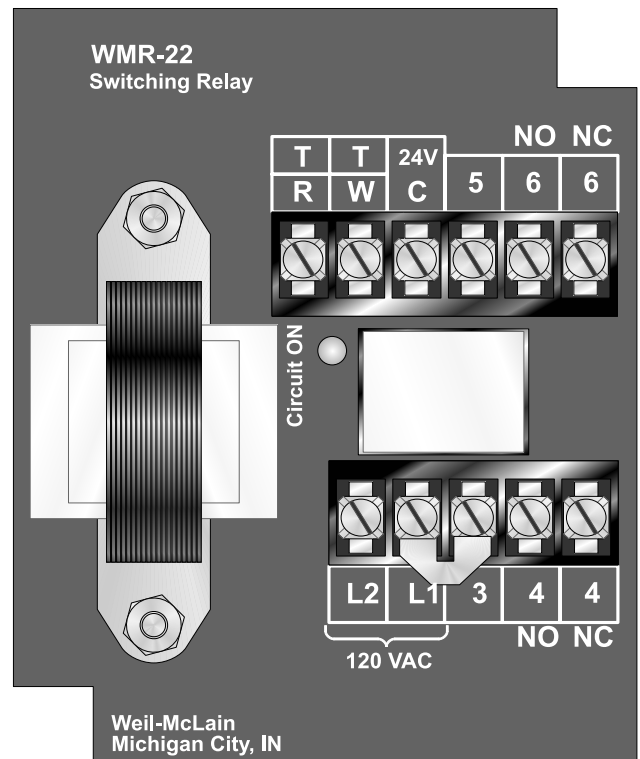
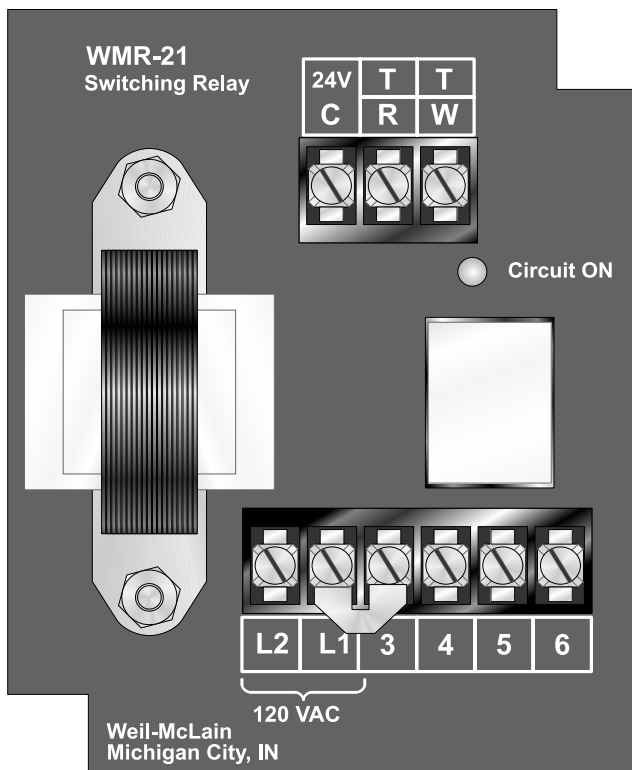


Switching Relays

Instruction manual

- **WMR-21** DPST (Double-pole/single throw)
- **WMR-22** DPDT (Double-pole/double throw)



⚠ WARNING

This manual must only be used by a **qualified heating installer/service technician**. Failure to comply could result in severe personal injury, death or substantial property damage.

WMR Switching Relays



Contents	Hazard definitions and “To the installer”	2
	Specifications and replacement parts	2
	WMR-21 layout, schematic diagram and cross reference table	3
	WMR-22 layout, schematic diagram and cross reference table	3
	WMR-21 and WMR-22 General wiring	4
	WMR-21 Typical application wiring	4

Hazard definitions



Indicates presence of hazards that **will cause** severe personal injury, death or substantial property damage.



Indicates presence of hazards that **can cause** severe personal injury, death or substantial property damage.



Indicates presence of hazards that **will or can cause** minor personal injury or property damage.



Indicates special instructions on installation, operation or maintenance that are important but not related to personal injury or property damage.

To the installer



Electrical shock hazard — Disconnect power before installing or servicing. Can cause severe personal injury, death or substantial property damage if ignored.



To avoid severe personal injury, death or substantial property damage, never connect the load terminals to a load that takes more current than the amount listed for the relay in the electrical ratings.



Use copper wire only. Use of any other type of wire could cause a fire hazard resulting in severe personal injury, death or substantial property damage.



All wiring must be installed in accordance with:

U.S.A. — National Electrical Code and any other national, state or local code requirements. Wiring must be N.E.C. Class 1.

Canada — C.S.A. C22.1 Canadian Electrical Code Part 1 and any other national, provincial or local code requirements. Wiring must be C.S.A. C22.1 C.E.C. Part 1.

Specifications

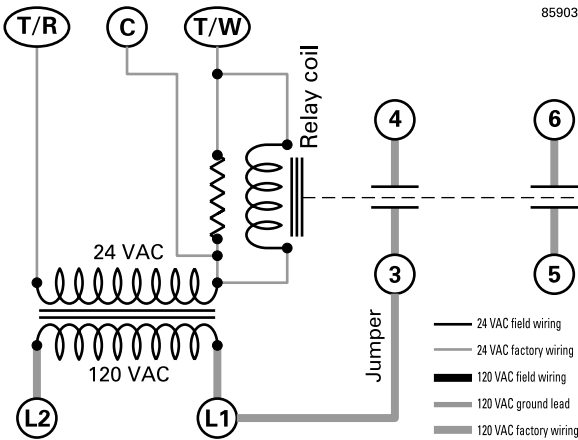
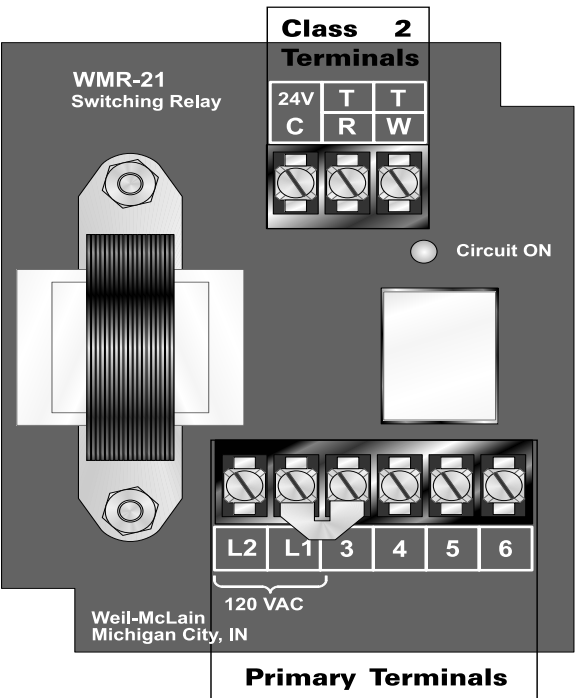
Weil-McLain model number	Transformer voltage	Switching action	Thermostat current amps	Single-phase motor rating	
				120 VAC	240 VAC
WMR-21	120 V 60 HZ 15 VA	DPST	.18	10 A, 1/3 HP	10 A, 1/2 HP
WMR-22	120 V 60 HZ 15 VA	DPDT	.18	10 A, 1/3 HP	10 A, 1/2 HP

Replacement parts

Part description	Weil-McLain part number
Plug-in relay (24 VAC coil)	510-311-021



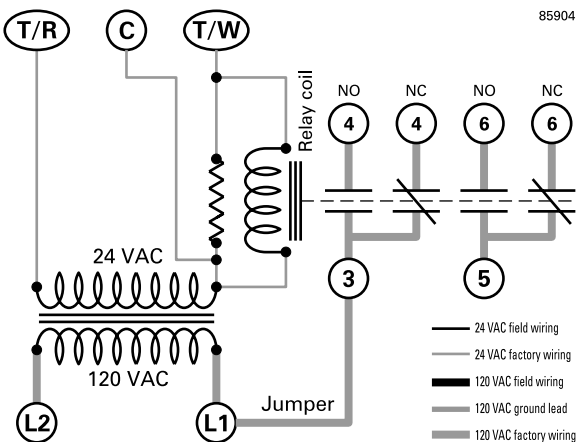
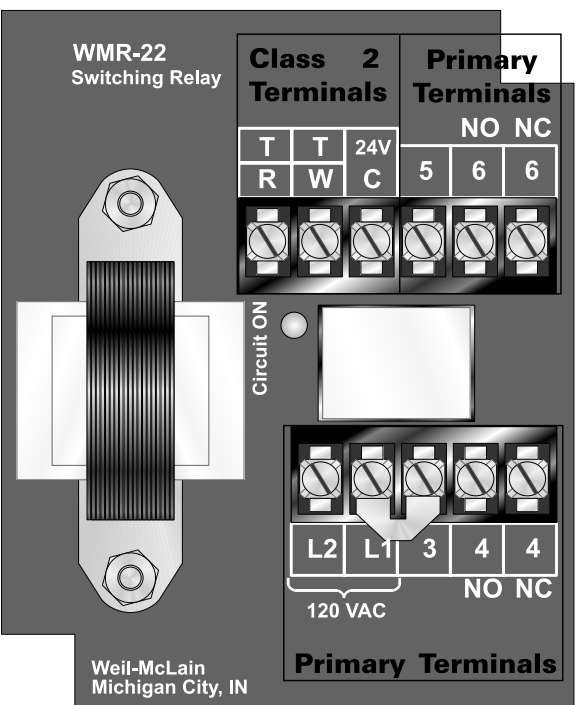
WMR-21 — Double pole/single throw switching relay



WMR-21 cross reference table

Weil-McLain	ECR Int'l.	Honeywell	Taco	White-Rodgers
WMR-21	AR821	RA 89A	SR501	809A-189
WMR-21	AR821	RA 832A	SR501	829A-832
WMR-21	AR821	R 845A	SR501	829A-845

WMR-22 — Double pole/double throw switching relay



WMR-22 cross reference table

Weil-McLain	ECR Int'l.	Taco
WMR-22	AR822	SR501

WMR Switching Relays



WMR-21 and WMR-22

General wiring

WMR-21 — Typical application

Add circulator to L8124A or C aquastat/relay

WARNING

Electrical shock hazard —

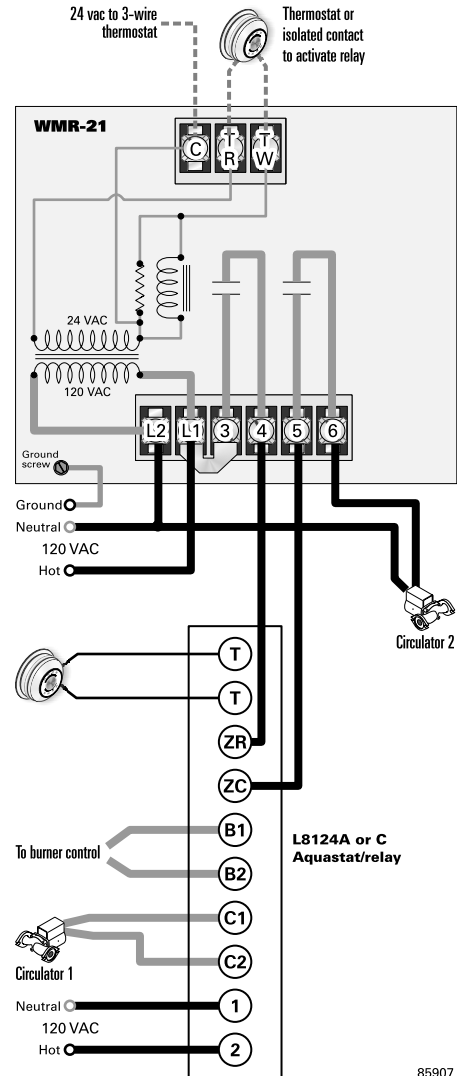
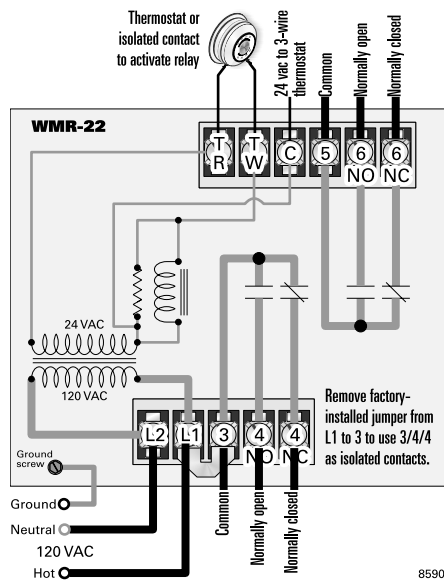
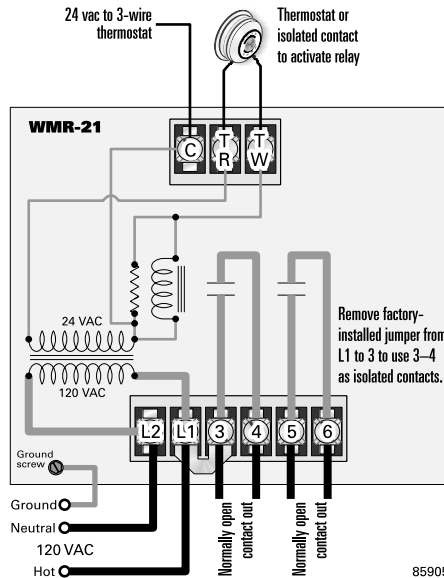
Disconnect power before installing or servicing. Can cause severe personal injury, death or substantial property damage if ignored.

NOTICE

All wiring must be installed in accordance with:

U.S.A. — National Electrical Code and any other national, state or local code requirements. Wiring must be N.E.C. Class 1.

Canada — C.S.A. C22.1 Canadian Electrical Code Part 1 and any other national, provincial or local code requirements. Wiring must be C.S.A. C22.1 C.E.C. Part 1.



Legend

—	120 VAC field wiring	—	120 VAC ground lead
—	24 VAC field wiring	—	120 VAC factory wiring
—	24 VAC factory wiring	—	120 VAC factory wiring