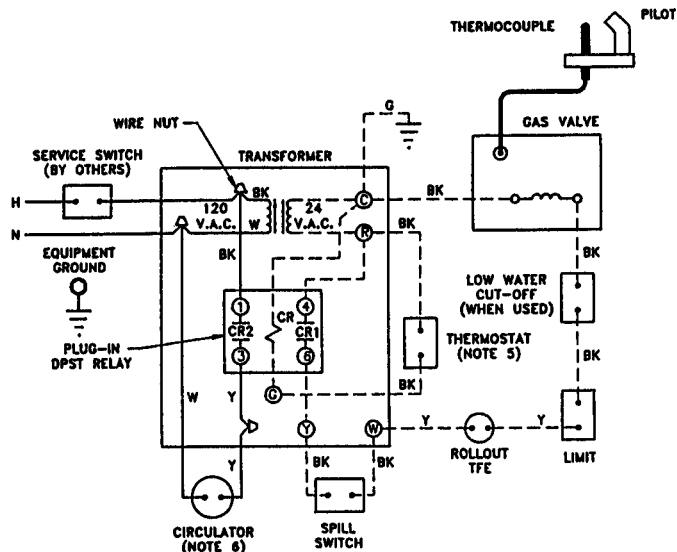


# SCHEMATIC WIRING DIAGRAM



## WARNING

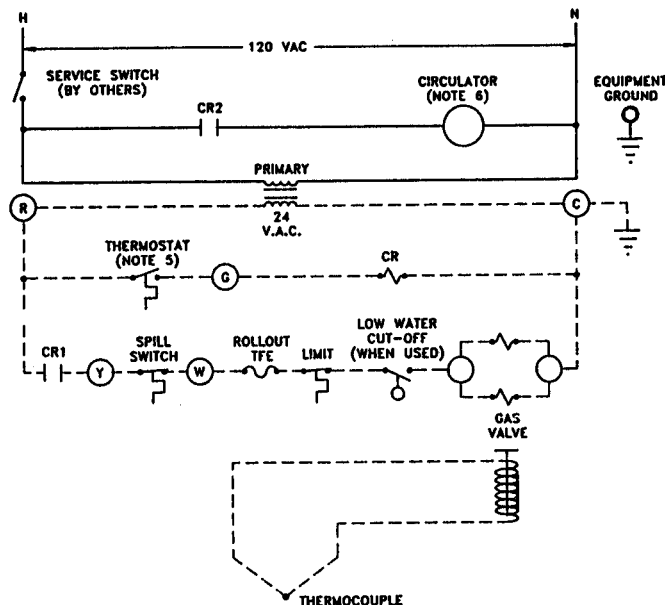
ELECTRICAL SHOCK HAZARD. CAN CAUSE SEVERE INJURY OR DEATH. DISCONNECT POWER BEFORE INSTALLING AND/OR SERVICING.

### NOTES:

- ALL WIRING MUST BE INSTALLED IN ACCORDANCE WITH:
  - U.S.A. - NATIONAL ELECTRICAL CODE AND ANY OTHER NATIONAL, STATE, OR LOCAL CODE REQUIREMENTS HAVING JURISDICTION.
  - CANADA - C.S.A. C22.1 CANADIAN ELECTRICAL CODE PART 1 AND ANY OTHER NATIONAL, PROVINCIAL, OR LOCAL CODE REQUIREMENTS HAVING JURISDICTION.
- ALL SAFETY CIRCUIT WIRING MUST BE:
  - U.S.A. - N.E.C. CLASS 1.
  - CANADA - C.S.A. C22.1 C.E.C. PART 1.
- IF ORIGINAL ROLLOUT TFE WIRE AS SUPPLIED WITH THE APPLIANCE MUST BE REPLACED, TYPE 200°C WIRE OR ITS EQUIVALENT MUST BE USED. IF OTHER ORIGINAL WIRE AS SUPPLIED WITH THE APPLIANCE MUST BE REPLACED, TYPE 90°C OR ITS EQUIVALENT MUST BE USED.

NOTICE - ALL CONTACTS SHOWN WITHOUT POWER APPLIED - OFF SHELF CONDITION.

# LADDER WIRING DIAGRAM



HIGH VOLTAGE —————  
LOW VOLTAGE - - - - -

- REFER TO CONTROL COMPONENT INSTRUCTIONS PACKED WITH BOILER FOR APPLICATION INFORMATION.
- FOR SINGLE ZONE SYSTEMS, THERMOSTAT ANTICIPATOR SETTING IS 0.40 AMPS. FOR MULTIPLE ZONE SYSTEMS USING ZONE VALVES OR CIRCULATORS, REFER TO COMPONENT MANUFACTURER'S INSTRUCTIONS FOR APPLICATION, WIRING AND THERMOSTAT ANTICIPATOR SETTING.
- CIRCULATOR NOT USED WITH EG GRAVITY HOT WATER SYSTEMS.

Wiring Diagram for CGM, EG-30 thru 65

- Standing Pilot, 24 Volt
- Redundant Gas Valve
- Forced Hot Water or Gravity Hot Water, Without Tankless Heater



**WEIL-McLAIN**

A United Dominion Company

Weil-McLain • 500 Blaine St. • Michigan City, IN 46360-2888

PART NUMBER 550-224-058/129OWM