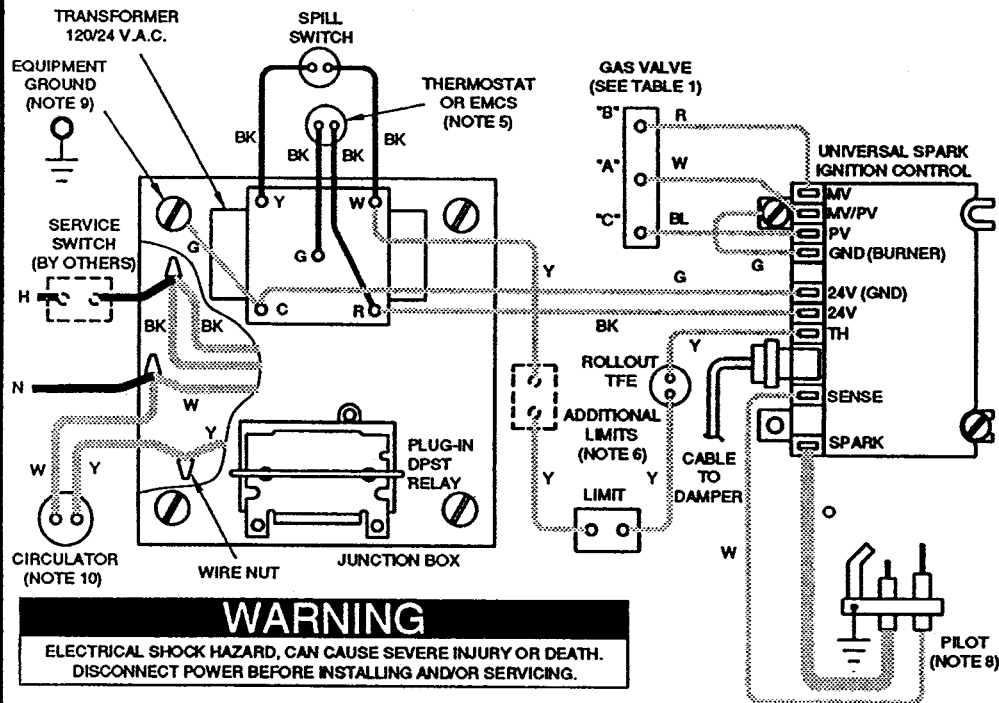


SCHEMATIC WIRING DIAGRAM



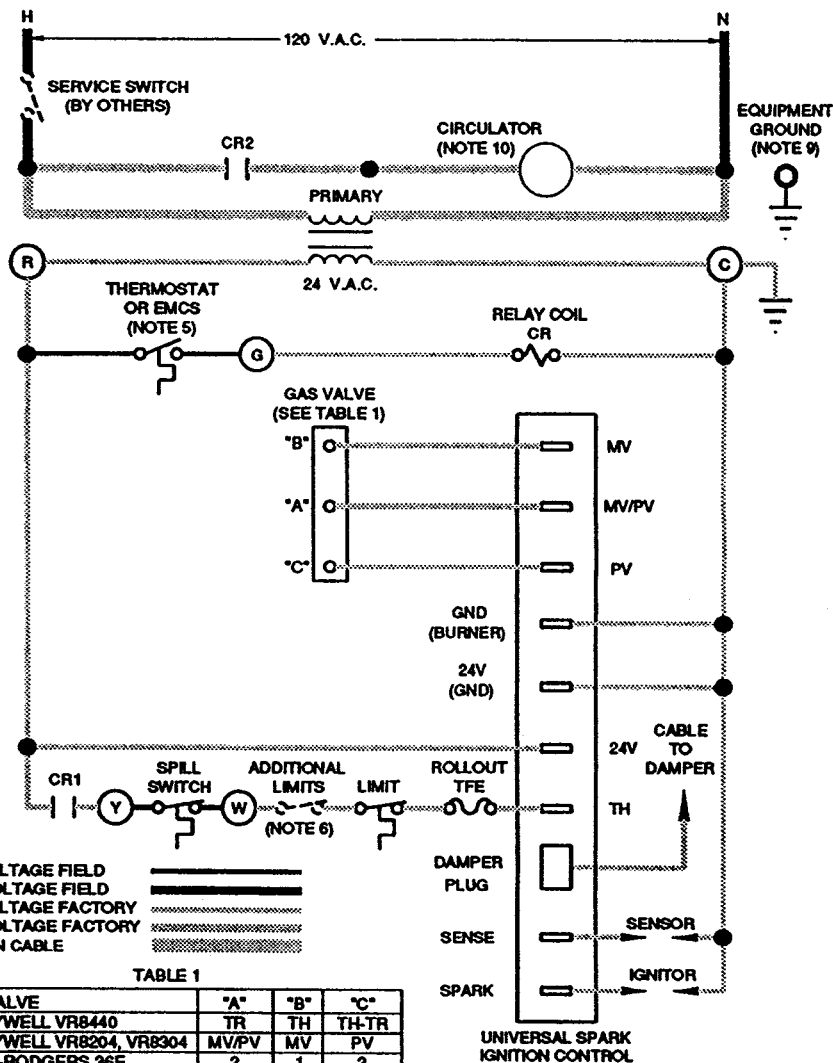
WARNING

ELECTRICAL SHOCK HAZARD, CAN CAUSE SEVERE INJURY OR DEATH.
DISCONNECT POWER BEFORE INSTALLING AND/OR SERVICING.

NOTES:

- ALL WIRING MUST BE INSTALLED IN ACCORDANCE WITH:
 - U.S.A. - NATIONAL ELECTRICAL CODE AND ANY OTHER NATIONAL, STATE OR LOCAL CODE REQUIREMENTS HAVING JURISDICTION.
 - CANADA - C.S.A. C22.1 CANADIAN ELECTRICAL CODE PART 1 AND ANY OTHER NATIONAL, PROVINCIAL OR LOCAL CODE REQUIREMENTS HAVING JURISDICTION.
- ALL WIRING MUST BE:
 - U.S.A. - N.E.C. CLASS 1.
 - CANADA - C.S.A. C22.1 C.E.C. PART 1.
- IF ORIGINAL ROLLOUT TFE WIRE AS SUPPLIED WITH THE APPLIANCE MUST BE REPLACED, TYPE 200°C WIRE OR ITS EQUIVALENT MUST BE USED. IF OTHER ORIGINAL WIRE AS SUPPLIED WITH THE APPLIANCE MUST BE REPLACED, TYPE 105°C OR ITS EQUIVALENT MUST BE USED.
- REFER TO CONTROL COMPONENT INSTRUCTIONS PACKED WITH BOILER FOR APPLICATION INFORMATION.
- THERMOSTAT - FOR SINGLE ZONE SYSTEMS, THERMOSTAT ANTICIPATOR SETTING IS 0.40 AMPS. FOR MULTIPLE ZONE SYSTEMS USING ZONE VALVES OR CIRCULATORS, REFER TO COMPONENT MANUFACTURER'S INSTRUCTIONS FOR APPLICATION WIRING AND THERMOSTAT ANTICIPATOR SETTING.
EMCS - FOR EMCS CONNECTION IN PLACE OF THERMOSTAT, REFER TO EMCS INSTALLATION/OPERATING MANUAL.
- L.W.C.O., ADDITIONAL HIGH LIMIT, WIRED IN SERIES.
- ALL CONTACTS SHOWN WITHOUT POWER APPLIED - OFF SHELF CONDITION.
- PILOT LEADWIRES ARE NOT FIELD REPLACEABLE. REPLACE PILOT ASSEMBLY IF NECESSARY.
- ⏏ DENOTES FIELD INSTALLED CHASSIS GROUND.
- CIRCULATOR IS FIELD INSTALLED AND WIRED FOR PFG-5 BOILER.

LADDER WIRING DIAGRAM



LOW VOLTAGE FIELD
HIGH VOLTAGE FIELD
LOW VOLTAGE FACTORY
HIGH VOLTAGE FACTORY
IGNITION CABLE

TABLE 1

GAS VALVE	"A"	"B"	"C"
HONEYWELL VR8440	TR	TH	TH-TR
HONEYWELL VR8204, VR8304	MV/PV	MV	PV
WHITE-RODGERS 36E	2	1	3
WHITE-RODGERS 36C	2-4	1	3
ROBERTSHAW 7200	C	M	P

*FACTORY JUMPERED

CG
25 thru 8
PFG-5

- Intermittent Pilot
- Natural Gas
- Forced Hot Water

WEIL-McLAIN

A Division of The Marley Company
Michigan City, Indiana 46360

PART NUMBER 550-224-103/0392WM