



**WEIL-McLAIN®**

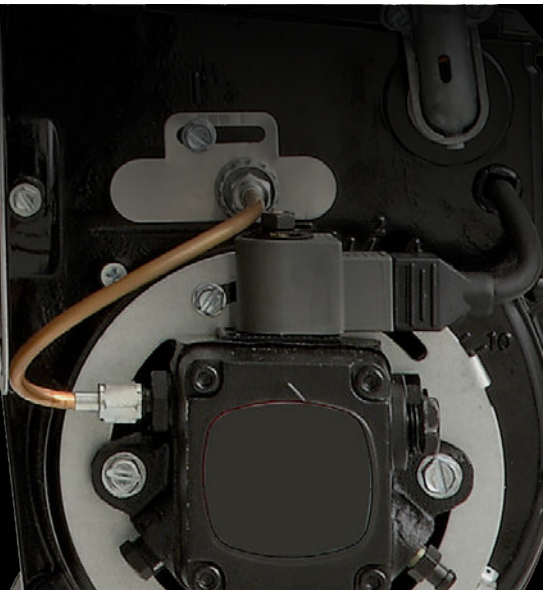
www.weil-mclain.com

**WGO™**

**GOLD SERIES OIL BOILER**

Water without Tankless Heater | Chimney Vent | 86-295 MBH

Series 3 | Efficiency 85-87%\*



- Durable cast iron heat exchanger design
- Easy to install and service
- Made with Weil-McLain quality

HIGH EFFICIENCY CAST IRON BOILER

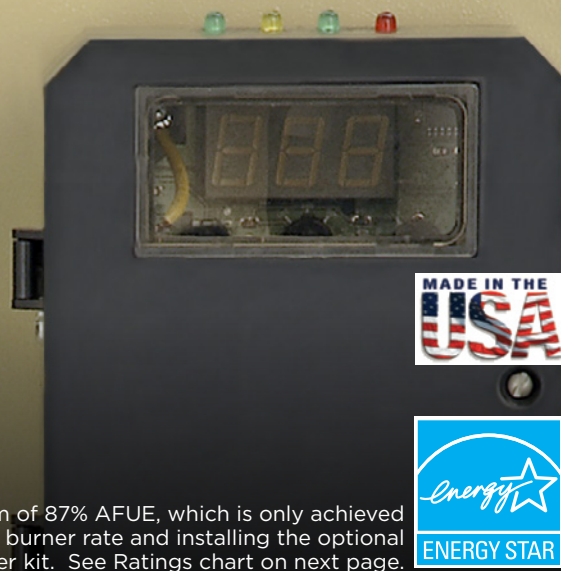
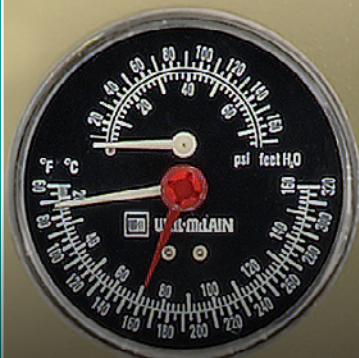
# WGO™

## GOLD SERIES OIL BOILERS



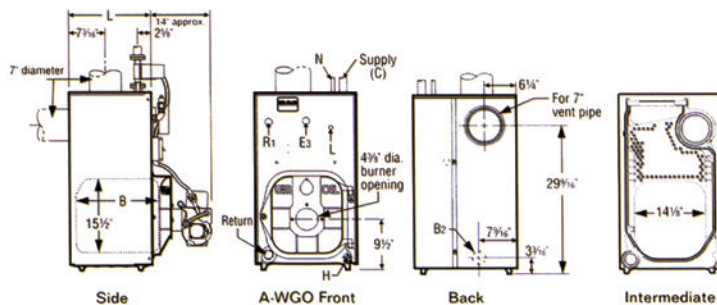
### APPLICATIONS INCLUDE:

Residential  
Light Commercial  
Multiple Boilers  
Indirect-fired Water Heating  
Radiant Heating  
... And Much More



\*ENERGY STAR® requires a minimum of 87% AFUE, which is only achieved by these models by reducing the burner rate and installing the optional vent damper kit. See Ratings chart on next page.

## DIMENSIONS



Tapping Location	Size (inches)	Control Tappings
B <sub>2</sub>	1 1/2	Alternate return — "A" units only
E <sub>3</sub>	1/2	Pressure/temperature gauge
H	3/4	Drain Valve
L	3/4	High limit/circulator control
N	1/2	Piping to expansion tank or automatic air vent
R <sub>1</sub>	3/4	Relief valve

Model	Supply "C" (inches)		Return (inches)	Dimension (inches)	
	P-WGO	A-WGO		B	L
WGO-2	1 1/4 (circulator flange)	1 1/2	1 1/2	10 1/2	13 3/4
WGO-3	1 1/4 (circulator flange)	1 1/2	1 1/2	13 1/2	16 7/8
WGO-4	1 1/4 (circulator flange)	1 1/2	1 1/2	13 5/8	16 7/8
WGO-5	1 1/4 (circulator flange)	1 1/2	1 1/2	16 7/8	20
WGO-6	1 1/4 (circulator flange)	1 1/2	1 1/2	20	23 1/8
WGO-7	not applicable	1 1/2	1 1/2	23 1/8	26 1/4
WGO-8	not applicable	1 1/2	1 1/2	26 1/4	29 3/8
WGO-9	not applicable	1 1/2	1 1/2	29 3/8	32 1/2

## RATINGS

ENERGY STAR*		Burner Input Rating		AHRI Certified Ratings			Draft Loss Through Boiler (in w/c)		Minimum Chimney Size			Approx. Shipping Weight (Lbs)
Model**		GPH (1)	MBH (3)	Heating Capacity (MBH) (2) (3)	Net Ratings (MBH) (3) (4)	AFUE (4)	Rectangular (in.)	Round (in.)	Height (ft.)			
*	WGO-2RD	0.70	98	86	75	87.0	.010	8X8	6	15	540	
	WGO-2	0.70	98	86	75	86.4	.010	8X8	6	15	540	
*	WGO-3RD	0.80	112	98	85	87.0	.010	8X8	6	15	595	
	WGO-3	0.95	133	115	100	85.3	.020	8X8	6	15	595	
*	WGO-4RD	1.00	140	123	107	87.0	.010	8X8	6	15	645	
	WGO-4	1.20	168	145	126	85.0	.010	8X8	6	15	645	
*	WGO-5RD	1.20	168	148	129	87.0	.015	8X8	7	15	760	
	WGO-5	1.45	203	175	152	85.0	.015	8X8	7	15	760	
*	WGO-6RD	1.40	196	173	150	87.0	.015	8X8	7	15	860	
	WGO-6	1.75	245	212	184	85.0	.015	8X8	7	15	860	
*	WGO-7RD	1.60	224	197	171	87.0	.015	8X8	8	15	930	
	WGO-7	2.00	280	242	210	85.0	.015	8X8	8	15	930	
	WGO-8	2.30	322	266	231	-	.025	8X12	8	20	1030	
	WGO-9	2.55	357	295	257	-	.030	8X12	8	20	1135	

\*ENERGY STAR® compliant with Version 3.0 Boiler Specification of 87% AFUE only when installed at the reduced burner rate (R) and with the optional vent damper kit (D). Burners shipped with standard rate nozzle, reduced rates achieved through nozzle change-refer to burner instructions or boiler's rating label for correct selection.

In the interest of continual improvements in product and performance, Weil-McLain reserves the right to change specifications without notice.

## STANDARD EQUIPMENT:

- Factory Tested and Assembled Cast Iron Section Assembly (jacket and collector hood are not assembled on 7, 8, and 9 section blocks)
- Insulated Steel Jacket
- Aluminized Steel Flue Collector Hood with Flue Cap on Top Outlet (convertible to rear outlet)
- Swing-Away Burner Mounting Door
- Refractory Blanket and Target Wall in Combustion Area
- Circulator (when ordered)
  - Sizes 2-4: Taco 007e
  - Sizes 5-6: Taco 007
- High Limit Control with Circulator Relay, LWCO Function, and integrated service switch
- Two Vent Pipe Brackets
- Pressure/ Temperature Gauge
- 30 PSIG ASME Relief Valve (boiler sections tested for 50 PSIG working pressure)
- Drain Valve
- Barometric Damper
- Built-in Air Separator

## OPTIONAL EQUIPMENT:

- High-Efficiency Flame-Retention Oil Burner (Beckett AFG, Carlin EZ or Riello). Specify 2-Stage Fuel Unit (optional) if Required.
- Vent Damper Kit
- W-M 5 & 10 Year Homeowner Protection Plan
- W-M Indirect-Fired Water Heaters

## NOTES:

- \*\* Add "P" for packaged boiler (WGO-2 through WGO-6 only). Add "A" for boiler only (WGO-2 through WGO-9).
- (1) No. 2 fuel oil-Commercial Standard Specification CS75-56. Heating value of oil-140,000 BTU/Gal.
  - (2) Based on standard test procedures prescribed by the United States Department of Energy at combustion condition of 13.5% CO<sub>2</sub> and -0.02" W.C. draft.
  - (3) MBH refers to thousands of BTU per hour.
  - (4) Net AHRI ratings are based on net installed radiation adequate for the requirements of the building, including a piping and pickup allowance of 1.15-sufficient for normal conditions. Provide additional allowance only for unusual piping and pick up loads.