


# AquaBalance™

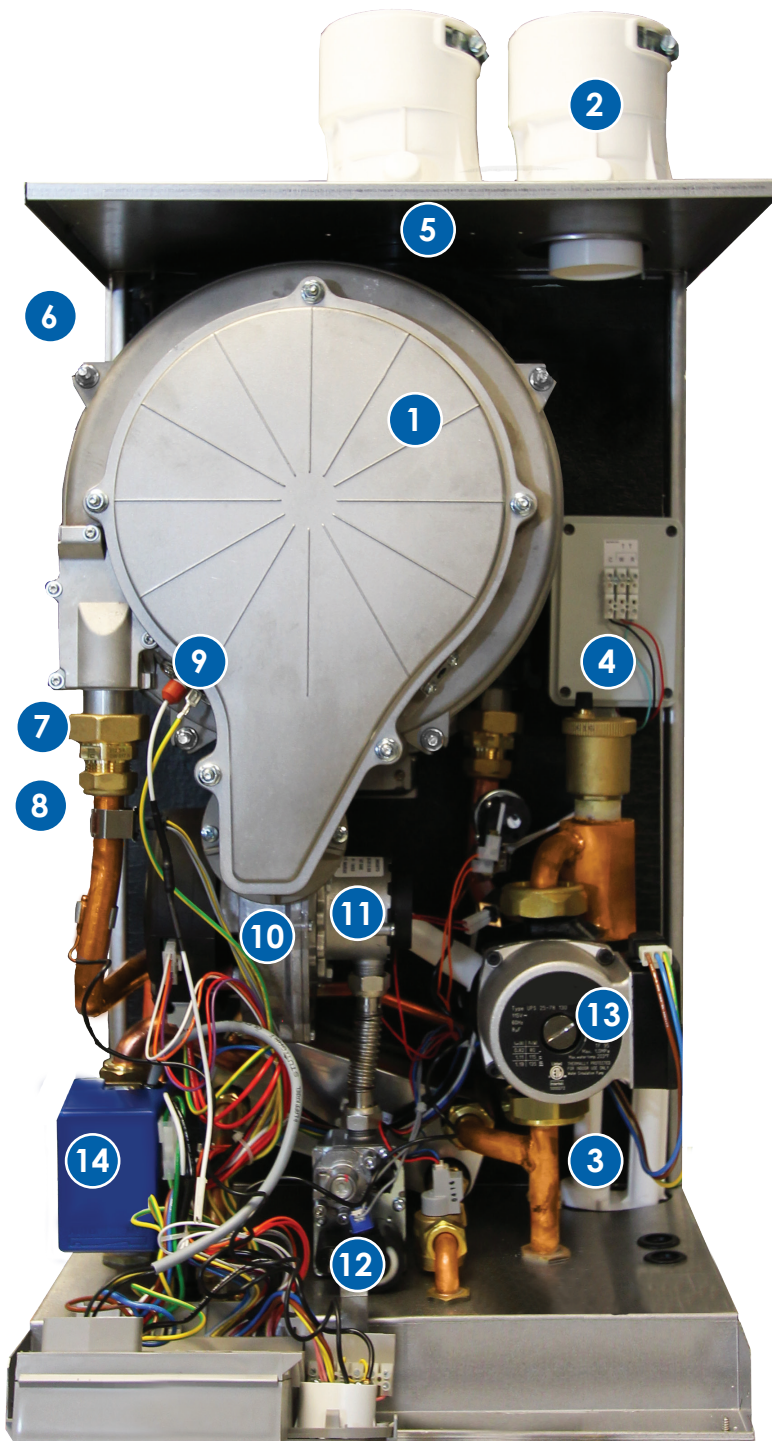
by  **WEIL-McLAIN®**

HEAT ONLY AND COMBINATION GAS WALL MOUNT BOILERS

 94.4%\*  
AFUE energy efficiency

 4.0  
GPM\*  
at 70° rise minimum

 80-155K  
heating input



## Features include:

1. 1" Diameter ASME certified 316L Stainless Steel single tube heat exchanger - low pressure drop
2. 3-in-1 vent adapter - accepts PVC, CPVC, SS or PP materials
3. Internal condensate trap
4. 24 VAC thermostat relay, fuse protected with prewired terminal strip
5. Heavy gauge insulated jacket - provides quiet operation
6. Contractor friendly removable sides
7. Quality brass nuts on heat exchanger for both DHW and space heating
8. Sensors used in place of additional boiler controls
9. Ignitor
10. Blower
11. Venturi
12. Gas valve with 10:1 turn down ratio

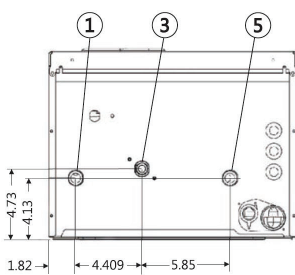
## Combi Version ONLY:

13. Internal 3-speed circulator
14. 3-way valve with bypass lever

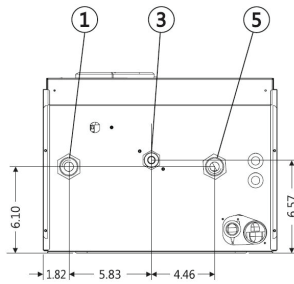
## Not pictured:

- Digital Display Honeywell Control
- 120V, 6 ft. power cord with plug

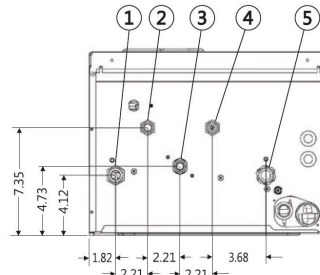
\*Achieved with 155 BTU combi boiler



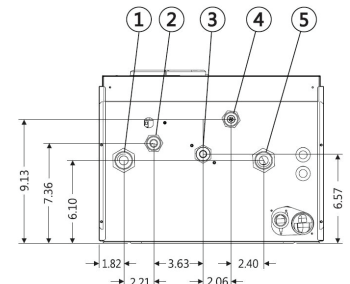
Heating Only Bottom (80/120)



Heating Only Bottom (155)



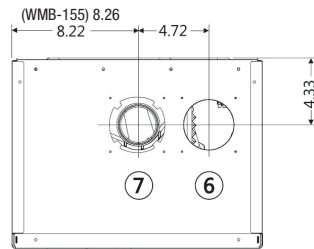
Combi Bottom (80/120)



Combi Bottom (155)



Front (80/120/155)



Top (80/120/155)

Connections (NPT/Inches)			
		80/120	155
1	Heating system supply tapping	3/4"	1"
2	Domestic hot water outlet	3/4"	3/4"
3	Gas connection	1/2"	1/2"
4	Domestic cold water supply	3/4"	3/4"
5	Heating system return tapping	3/4"	1"
6	Combustion air connection	3"	3"
7	Flue outlet connection	3"	3"

Domestic Hot Water Flow Rate (Based on 70° temperature rise)	
Model <sup>1</sup>	Gallons per minute
WMB-80C	2.0
WMB-120C	3.2
WMB-155C	4.0

	Model <sup>1</sup>	Input MBH		AHRI Certified Ratings			Vent/air pipe size (Inches) <sup>4</sup>	Vent material	Boiler water content (Gallons)	Approx. shipping weight (Lbs.)
		Max.	Min.	DOE heating capacity MBH <sup>2</sup>	Seasonal efficiency AFUE %	Net water rating MBH <sup>3</sup>				
HEAT ONLY	WMB-80	80	8	73	92.4	63	2 or 3	PVC, CPVC, PP, SS	.45	61
	WMB-120	120	12	109	92.2	95	2 or 3	PVC, CPVC, PP, SS	.55	64
	WMB-155	155	15.5	143	94.4	124	3	PVC, CPVC, PP, SS	.65	67
COMBI	WMB-80C	80	8	73	92.4	63	2 or 3	PVC, CPVC, PP, SS	.53	70
	WMB-120C	120	12	109	92.2	95	2 or 3	PVC, CPVC, PP, SS	.63	77
	WMB-155C	155	15.5	143	94.4	124	3	PVC, CPVC, PP, SS	.75	87

<sup>1</sup>Natural gas field convertible to LP with optional kit.

<sup>2</sup>Based on standard test procedures prescribed by the United States Department of Energy. MBH refers to thousands of Btu per hour.

<sup>3</sup>Net AHRI ratings are based on net installed radiation of sufficient quantity for the

requirement of the building and nothing needs to be added for normal piping and pick-up. Ratings are based on piping and pick-up allowance of 1.15. An additional allowance should be made for unusual piping and pick-up loads.

<sup>4</sup>Boilers must be vented directly to the outdoors. See boiler manuals for details.

### STANDARD EQUIPMENT:

- Stainless Steel heat exchanger
- Mounting bracket and hardware
- Spark ignition
- Outdoor sensor
- Honeywell control
- T & P gauge
- 3-prong power cord
- Water treatment inhibitor and test kit
- Condensate drain
- Relief valve
- 3-in-1 Vent adapter
- Low NOx SCAQMD compliant

### COMBI MODELS:

- DHW flat plate heat exchanger
- 3-speed circulator

### OPTIONAL EQUIPMENT:

- Propane conversion kit
- Concentric vent kit
- Condensate neutralizer

### WARRANTY:

- 10 year limited warranty heat exchanger for residential use
- 5 year limited warranty heat exchanger for commercial use
- 2 year limited warranty all other parts

In the interest of continual improvement in product and performance, Weil-McLain reserves the right to change specifications without notice.

WM1707\_FLY\_069 AqB

