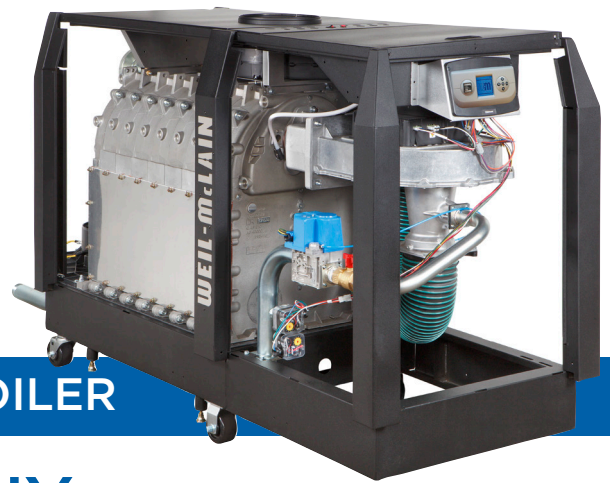


SlimFit®

1,000 - 2,000 MBH CONDENSING BOILER



TOP 10 REASONS TO BUY

Right Fit for Retrofits:

1. **Compact Design** - The SlimFit is a perfect solution for retrofits/replacement installations with difficult access to mechanical rooms, narrow hallways and small elevators. It can also be disassembled (split into two sections) allowing access to weight-restricted areas and even more confined spaces. Other heat exchanger types, such as SS water tube or SS fire tube designs, are typically larger, heavier and cannot be disassembled.

Easy to Install:

2. **Completely Wired, Programmed, Tested and Factory Assembled** - Allows for quick on-site installation and startup, saving time and money.
3. **Controls Express Set Up** - Guides the installer through the setup and startup process, resulting in simpler and quicker installation.
4. **Flexible Boiler Configuration (left or right hand connections)** - Zero clearance on one side allows for installation of boilers back-to-back or wall-adjacent, minimizing installation footprint. All piping can be on the same side.
5. **Wheels and Leveling Legs** - Easily unload the boiler, maneuver around corners and bring the boiler inside the mechanical room. Leveling legs provide assistance for setting up the SlimFit on uneven surfaces. The wheels can be removed and, if needed, the mounting points can be used to attach seismic brackets.

Easy to Own:

6. **Efficiency Above 96%** - Less fuel usage offers an environmentally friendly solution with lower operating costs, contributing to LEED points and green building certifications.
7. **Intuitive Interface** - User-friendly interface provides at-a-glance boiler status and easy access to troubleshooting, historical data and alarms.
8. **Advanced Boiler Controls** - Lead/lag up to 8 boilers, boiler rotation for equal run hours, full modulation for improved comfort and boiler performance, warm weather shutdown, frost protection and maintenance reminders are just few of many features that come standard on the SlimFit, providing additional operating efficiencies at no extra cost. Modbus® and BACnet® connectivity is available for integration with the most typical BAS (building automation systems).
9. **Non-Metallic (Composite) Heat Exchanger Base** - Protects heat exchanger against corrosive environment caused by condensate.
10. **Ten-year Non-prorated Heat Exchanger Warranty and Two-year Parts Warranty** - peace of mind and lower maintenance costs.