



HIGH-EFFICIENCY HEAT ONLY/
COMBINATION BOILER
Water | Natural/Propane Gas | 80-155 MBH
Direct Vent | Efficiency 95.0%

SUBMITTAL SHEET

JOB NAME _____

LOCATION _____

ARCH. / ENGR. _____

WHOLESALE _____

MECH. CONTRACTOR _____

MODEL NO. _____ GAS TYPE _____

BTU/HR INPUT _____ BTU/HR OUTPUT _____

STANDARD EQUIPMENT

Features/Standard Equipment

- 95.0% annual fuel utilization efficiency (AFUE) - low fuel usage, saves energy
- Natural or Propane (LP) gas operation - factory shipped as NG, optional LP conversion kit
- Compact design - increases placement options
- Heavy gauge insulated jacket - provides quiet operation
- 10-to-1 turn down ratio - precisely matches energy usage to the immediate system need
- Low NOx rated - low emissions level achieved South Coast certification
- Single tube, large diameter, ASME certified 316L Stainless Steel heat exchanger
- Pre-wired, plug-in ready electrical design
- Contractor friendly removable sides - makes service clean and easy
- Wall mounting bracket and hardware

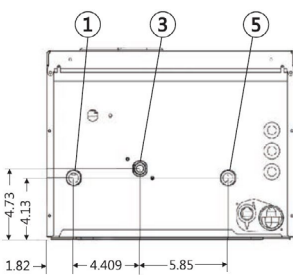
Optional Equipment

- Propane conversion kit
- Concentric vent kit
- Condensate neutralizer
- Water treatment - inhibitor and test kit

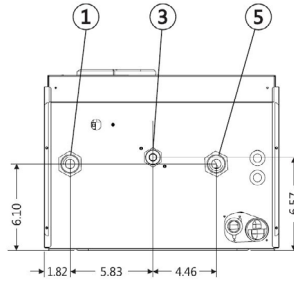
- Honeywell® boiler control with digital display
- Commercial grade 120V power cord with 3 prong plug
- Unique 3-in-1 vent adapter - approved to accept PVC, CPVC, SS or PP vent materials
- Multiple vent options - direct vent with 2 pipes or concentric, through sidewall or roof
- Internal condensate trap
- 24VAC thermostat relay
- Factory tested

Combi Features Only

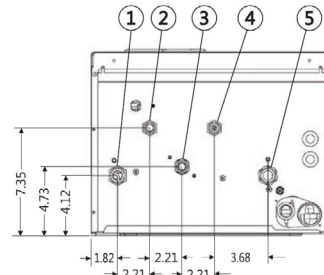
- Internal 3-speed circulator
- DHW flat plate heat exchanger



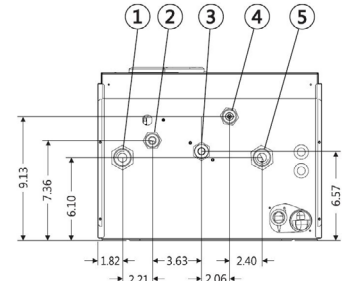
Heating Only Bottom (80/120)



Heating Only Bottom (155)



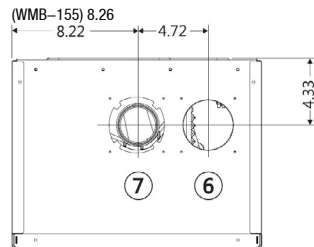
Combi Bottom (80/120)



Combi Bottom (155)



Front (80/120/155)



Top (80/120/155)

Connections (NPT/Inches)

		80/120	155
1	Heating system supply tapping	3/4"	1"
2	Domestic hot water outlet	1/2"	3/4"
3	Gas connection	1/2"	3/4"
4	Domestic cold water supply	1/2"	3/4"
5	Heating system return tapping	3/4"	1"
6	Combustion air connection	3"	3"
7	Flue outlet connection	3"	3"

Domestic Hot Water Flow Rate (Based on 70° temperature rise)

Model ¹	Gallons per minute
AB-80C	2.0
AB-120C	3.2
AB-155C	4.0

	Input MBH		AHRI Certified Ratings			Vent/air pipe size (Inches) ⁴	Vent material	Boiler water content (Gallons)	Approx. shipping weight (Lbs.)	
	Model ¹	Max.	Min.	DOE heating capacity MBH ²	Seasonal efficiency AFUE %					Net water rating MBH ³
HEAT ONLY	AB-80	80	8	75	95.0	65	2 or 3	PVC, CPVC, PP, SS	1.03	64
	AB-120	120	12	112	95.0	97	2 or 3	PVC, CPVC, PP, SS	1.23	67
	AB-155	155	15.5	144	95.0	125	3	PVC, CPVC, PP, SS	1.23	67
COMBI	AB-80C	80	8	75	95.0	65	2 or 3	PVC, CPVC, PP, SS	1.11	77
	AB-120C	120	12	112	95.0	97	2 or 3	PVC, CPVC, PP, SS	1.31	80
	AB-155C	155	15.5	144	95.0	125	2 or 3	PVC (3" only), CPVC, PP, SS	1.33	87

¹Natural gas field convertible to LP with optional kit.

²Based on standard test procedures prescribed by the United States Department of Energy. MBH refers to thousands of Btu per hour.

³Net AHRI ratings are based on net installed radiation of sufficient quantity for the re-

quirement of the building and nothing needs to be added for normal piping and pick-up. Ratings are based on piping and pick-up allowance of 1.15. An additional allowance should be made for unusual piping and pick-up loads.

⁴Boilers must be vented directly to the outdoors. See boiler manuals for details.