



# GV BOILER

Gas/Air Manifold Assembly

Part Number 382-200-355 for Series 1, 2 & 3

Part Number 382-200-362 for Series 4

## Replacement Instructions

### WARNING

This symbol is used in these instructions to indicate presence of hazards which can cause severe personal injury, death or substantial property damage.

### WARNING

- These instructions are for use by a qualified installer/service technician. Failure to follow all instructions in proper order can cause severe personal injury, death or substantial property damage.
- Shut off main gas valve and disconnect electricity to boiler. Failure to do so can cause severe personal injury, death or substantial property damage.

### Contents of Kit:

- Gas/Air Manifold
- O-ring for manifold
- Gas valve fitting
- Miscellaneous hardware: screws to mount manifold to inducer housing, to mount gas valve to inducer housing, to mount manifold fitting to gas valve, plastic tie wrap to re-attach condensate trap to manifold.
- Instructions

1. Remove:  
Jacket top and front panels.  
All hoses from gas/air manifold assembly (save to re-install). See Figure 1.  
*For Series 1, 2 & 3, remove left-handed threaded fitting from gas valve.*

OR

*For Series 4, remove the gas valve to manifold fitting by removing four screws (#7 metric head) from fitting. Gas/air manifold assembly.  
Gas orifice plate (save to re-install).*

2. Install new gas/air manifold assembly. Loosely screw in 2 back screws to support assembly.
3. *For Series 1, 2 & 3, align left-hand threaded fitting to gas valve and tighten.*
  - a. Do not clamp gas tubing with excessive force, as it will deform.
  - b. Do not apply excessive force to gas valve.

OR

*For Series 4, align gas valve manifold fitting to gas valve with new O-ring in place and replace four screws in the gas valve fitting.*

### WARNING

Carefully seat O-ring in manifold fitting groove to insure proper fit as manifold fitting is mated to gas valve. Failure to do so can result in a fire or explosion causing severe personal injury or property damage.

4. Slide in gas orifice plate and re-install two front screws in gas/air manifold assembly.

5. Tighten all four screws in gas/air manifold assembly evenly, until metal-to-metal contact is made around entire manifold.
6. Re-connect hoses as shown in Figure 1. Secure wire tie or hose clamp on air inlet hose.
7. Turn on electric and gas to boiler. Check boiler normal sequence of operation and follow checkout procedure in Boiler Manual.
8. Replace jacket front and top panels.

### RECOMMENDED TOOLS:

10" CRESCENT WRENCH  
SMALL PIPE WRENCH  
5/16" NUT DRIVER  
5/16" SOCKET WITH EXTENSION  
#7 METRIC WRENCH OR SOCKET  
1/4" SLOTTED SCREWDRIVER

### WARNING

Do not disassemble blower housing. A fire or explosion causing severe personal injury or property damage can result.

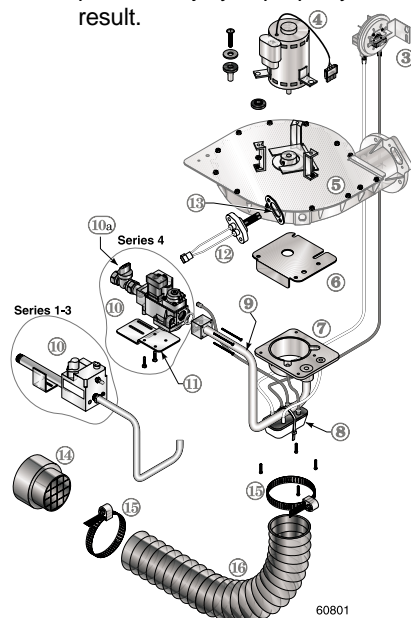


Figure 1



Weil-McLain  
500 Blaine Street  
Michigan City, IN 46360-2388  
<http://www.weil-mclain.com>

Part number 550-141-607/0601