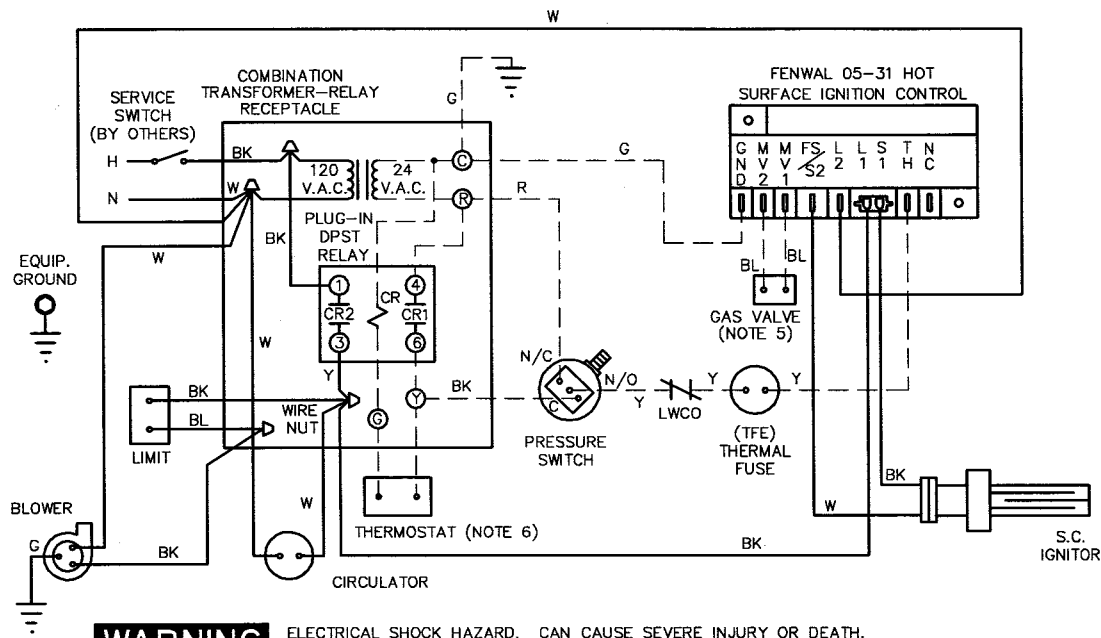
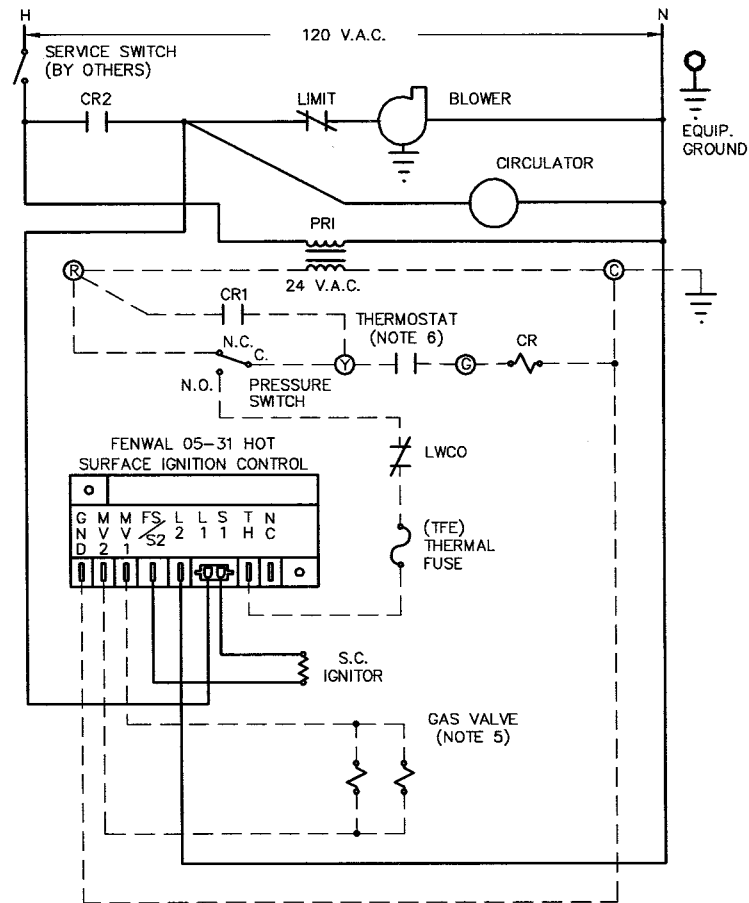


SCHEMATIC WIRING DIAGRAM



LADDER WIRING DIAGRAM



WARNING ELECTRICAL SHOCK HAZARD. CAN CAUSE SEVERE INJURY OR DEATH. DISCONNECT POWER BEFORE INSTALLING AND/OR SERVICING.


NOTE:

- ALL WIRING MUST BE INSTALLED IN ACCORDANCE WITH:
 - U.S.A. - NATIONAL ELECTRICAL CODE AND ANY OTHER NATIONAL, STATE, OR LOCAL CODE REQUIREMENTS HAVING JURISDICTION.
 - CANADA - C.S.A. C22.1 CANADIAN ELECTRICAL CODE PART 1 AND ANY OTHER NATIONAL, PROVINCIAL, OR LOCAL CODE REQUIREMENTS HAVING JURISDICTION.
- ALL WIRING MUST BE:
 - U.S.A. - N.E.C. CLASS 1.
 - CANADA - C.S.A. C22.1 C.E.C. PART 1.
- IF ORIGINAL WIRE AS SUPPLIED WITH THE APPLIANCE MUST BE REPLACED, TYPE 105° C OR ITS EQUIVALENT MUST BE USED.
- REFER TO CONTROL COMPONENT INSTRUCTIONS PACKED WITH BOILER FOR APPLICATION INFORMATION.
- GAS VALVE TERMINALS:
 - WHITE-RODGERS : 1 AND 2
 - HONEYWELL : MV AND MV
 - ROBERTSHAW : 1 AND 2
- THERMOSTAT HEAT ANTICIPATOR SETTING : 0.40 AMPS.

HIGH VOLTAGE ———
LOW VOLTAGE - - - - -

AHE SERIES 3

SCHEMATIC AND LADDER WIRING DIAGRAM FOR
FENVAL 05-31 HOT SURFACE IGNITION
NATURAL OR PROPANE GAS FIRED
FORCED HOT WATER BOILERS



WEIL-McLAIN
A United Dominion Company

Weil-McLain • 500 Blaine St. • Michigan City, IN 46360-2388

PART NUMBER 550-141-530/0792WM