

Reliability... Redefined!

- ✓ **85.6% Thermal Efficiency**
- ✓ **Water or Steam**
- ✓ **Gas, Oil or Gas/Oil**
- ✓ **1010 – 5845 MBH Input**
- ✓ **24-145 H.P.**
- ✓ **Complies to LEED**
- ✓ **Single or Multiple Boiler Systems**
- ✓ **With or without tankless heater**
- ✓ **Packaged or Knock-down**
- ✓ **On/Off, Low/High/Off,
Low/High/Low or Full Modulation**

Model 88
-Est. 1985-
Weil-McLain



Dimensions (inches)								
Model	A	B	C	D	E	L	W	H
488	23	—	—	10	54 3/4	34 3/4	30	23 3/8
588	31	—	—	10	54 3/4	42 3/4	38	31 3/8
688	39	—	—	10	54 3/4	50 3/4	46	39 3/8
788	47	—	—	12	53 3/4	58 3/4	54	47 3/8
888	55	—	—	12	53 3/4	66 3/4	62	55 3/8
988	63	—	—	14	52 3/4	74 3/4	70	63 3/8
1088	71	—	—	14	52 3/4	82 3/4	78	71 3/8
1188	79	—	—	14	52 3/4	90 3/4	86	79 3/8
1288	87	39 1/2	—	14	52 3/4	98 3/4	94	87 3/8
1388	95	47 1/2	—	14	52 3/4	106 3/4	102	95 3/8
1488	103	55 1/2	—	16	51 3/4	114 3/4	110	103 3/8
1588	111	63 1/2	—	16	51 3/4	122 3/4	118	111 3/8
1688	119	47 1/2	—	16	51 3/4	130 3/4	126	119 3/8
1788	127	31 1/2	79 1/2	18†	51 3/4	138 3/4	134	127 3/8
1888	135	39 1/2	87 1/2	18†	51 3/4	146 3/4	142	135 3/8

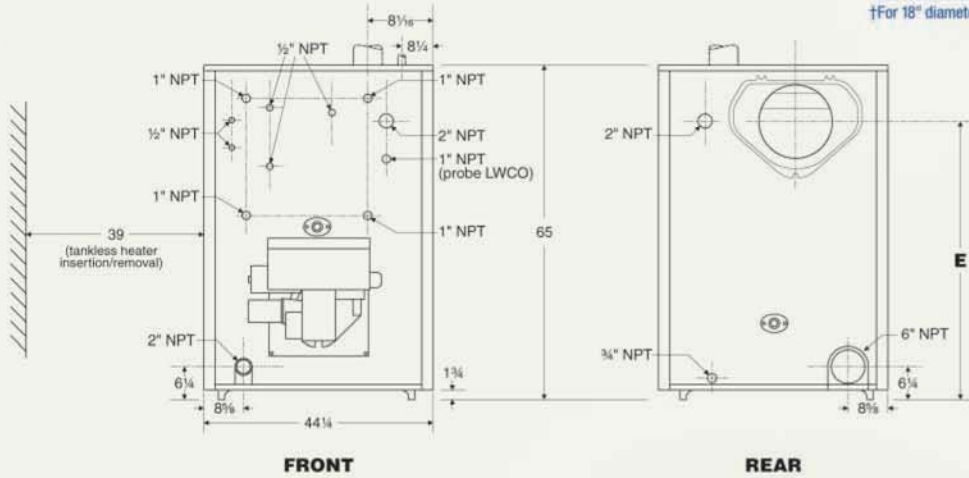
†For 18" diameter breaching, flue collar is oval (19 1/8 x 16 1/8")

Model	Supply & return tapplings				Dimension F
	Supply tapplings (No. & size)		Return tapplings (No. & size)*		
	Steam	Water	Steam	Water	
488R	2-5"	2-5"	1-6"	1-6"	
488	2-5"	2-5"	1-6"	1-6"	
588	2-5"	2-5"	1-6"	1-6"	
688	2-5"	2-5"	1-6"	1-6"	
788	2-5"	2-5"	1-6"	1-6"	
888	2-5"	2-5"	1-6"	1-6"	
988R	2-5"	2-5"	1-6"	1-6"	
988	2-5"	2-5"	1-6"	1-6"	
1088R	2-5"	2-5"	1-6"	1-6"	
1088	2-5"	2-5"	1-6"	1-6"	
1188	2-5"	2-5"	1-6"	1-6"	
1288	3-5"	2-5"	1-6"	1-6"	
1388	3-5"	2-5"	1-6"	1-6"	
1488	3-5"	2-5"	1-6"	1-6"	
1588	3-5"	2-5"	1-6"	1-6"	
1688R	3-5"	2-5"	1-6"	1-6"	
1688	3-5"	2-5"	1-6"	1-6"	
1788	4-5"	2-5"	1-6"	1-6"	
1888	4-5"	2-5"	1-6"	1-6"	

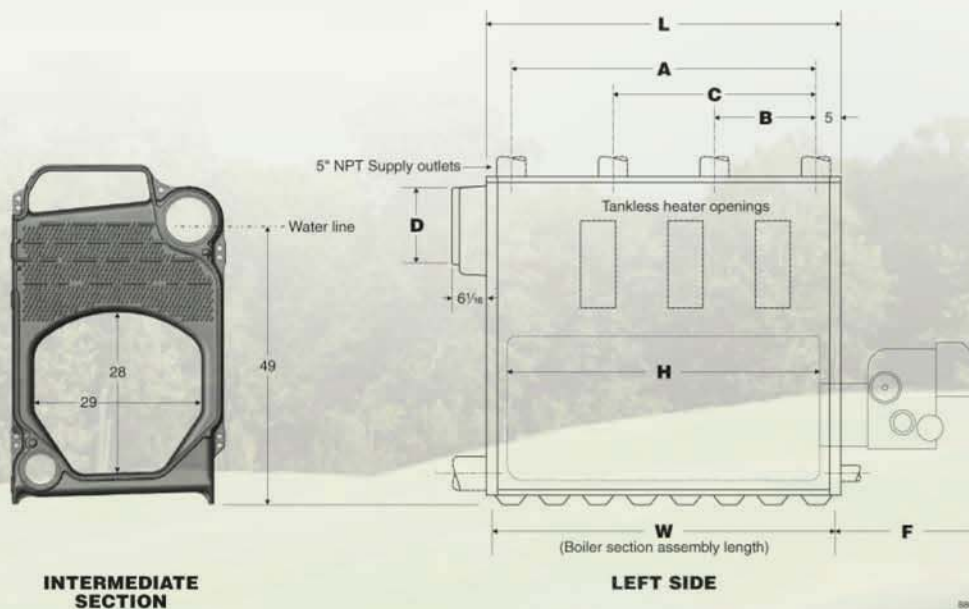
*Use recommended piping connections.

†For 18" diameter breaching, flue collar is oval (19 1/8 x 16 1/8")

See Burner Specification & Data Sheets



Model	I-B-R Vent or Liner Dia (in)		Boiler Flue Collar Dimensions (in)
	Forced Draft	Balanced Draft	
488	10	12	10 round
588	10	15	10 round
688	12	15	10 round
788	12	18	12 round
888	14	18	12 round
988	14	18	14 round
1088	14	21	14 round
1188	16	21	14 round
1288	16	21	14 round
1388	16	24	14 round
1488	18	24	16 round
1588	18	24	16 round
1688	18	24	16 round
1788	18	24	16 1/8 x 19 7/8 oval
1888	20	27	16 1/8 x 19 7/8 oval

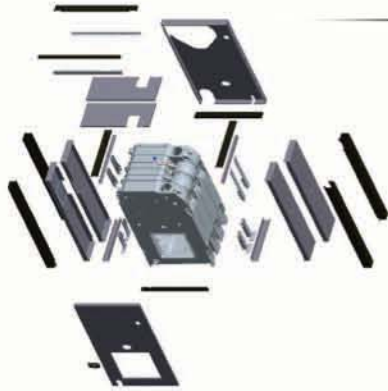


Ratings

Model	I=B=R			I=B=R Net Rating				Flue Outlet (Dia)	Combustion Efficiency		Thermal Efficiency	
	Oil Input GPH	Gas Input MBH	Gross Output MBH	Steam MBH	Steam Sq. Ft.	Water MBH	Boiler H.P.		OIL	GAS	OIL	GAS
488R	6.9	996	827	620	2,583	719	24.7	10 in.	87.5	84.8	85.6	83.1
488	7.0	1,010	839	629	2,621	730	25.1	10 in.	87.5	84.8	85.6	83.1
588	9.4	1,356	1,126	845	3,521	979	33.6	10 in.	87.0	84.4	85.6	83.1
688	11.8	1,701	1,413	1,072	4,469	1,229	42.2	10 in.	86.7	84.1	85.6	83.1
788	14.2	2,046	1,700	1,311	5,463	1,478	50.8	12 in.	86.5	83.9	85.6	83.1
888	16.6	2,382	1,987	1,543	6,427	1,728	59.4	12 in.	86.3	83.7	85.6	83.1
988R	17.2	2,482	2,062	1,601	6,671	1,793	61.6	14 in.	86.2	83.7	85.6	83.1
988	18.8	2,737	2,274	1,766	7,358	1,977	67.9	14 in.	86.2	83.7	85.6	83.1
1088R	20.0	2,887	2,399	1,863	7,763	2,086	71.7	14 in.	86.2	83.6	85.6	83.1
1088	21.5	3,082	2,561	1,988	8,283	2,227	76.5	14 in.	86.2	83.6	85.6	83.1
1188	23.5	3,428	2,848	2,211	9,213	2,477	85.1	14 in.	86.1	83.5	85.7	83.1
1288	26.0	3,773	3,135	2,434	10,147	2,726	93.7	14 in.	86.0	83.5	85.7	83.1
1388	28.5	4,119	3,422	2,657	11,071	2,976	102.2	14 in.	86.0	84.4	85.7	83.1
1488	31.0	4,464	3,709	2,880	12,000	3,225	110.8	16 in.	86.0	83.4	85.7	83.1
1588	33.0	4,809	3,996	3,102	12,925	3,475	119.4	16 in.	85.9	83.3	85.7	83.1
1688R	34.5	4,979	4,137	3,212	13,383	3,597	123.6	16 in.	85.9	83.3	85.7	83.1
1688	35.5	5,155	4,283	3,325	13,854	3,724	127.9	16 in.	85.9	83.3	85.7	83.1
1788	38.0	5,494	4,570	3,548	14,783	3,974	136.5	18 in.*	85.9	83.3	85.7	83.1
1888	40.5	5,845	4,857	3,771	15,713	4,123	145.1	18 in.*	85.9	83.3	85.7	83.1

- Burner input based on maximum of 2,000 ft. altitude - for higher altitudes consult Weil, McLain representative.
- No.2 Fuel oil - Commercial Standard Spec. CS75-56. Heat value of oil - 140,000 BTU/G.
- Stack gas volume at outlet temperature
- With 0.10" WC positive pressure at flue collar.
- Consult Burner Specification Sheets for gas pressure required.
- Gross I=B=R ratings have been determined under the I=B=R provision governing forced draft boiler-burner units
- Net I=B=R-Ratings are based on net installed radiation of sufficient quantity for the requirements of the building and nothing need be added for normal piping and pick-up. Water ratings are based on a piping and pick-up allowance of 115. Steam ratings are based on the following allowances: 488 and 588 - 1333; 688 - 1323; 788 - 1300; 888 - 1289; and 988 through 1888 - 1288. An additional allowance should be made for gravity hot water systems or for unusual piping and pick up loads. Consult Weil-McLain representative.
- Flue collar connection is oval, 16 1/8" x 19 7/8"





NEW Jacket design:

- Modular jacketing and toolless jacket panels for easy access
- 3 inches of insulation to minimize jacket losses, maximizing thermal efficiencies
- Modular side panels for ease of assembly
- High temperature site glass grommets
- Part number labels on all components for easy assembly

NEW Efficiencies!

- 85.7% Thermal Efficiencies (see ratings)
- HXT-bars optimize heat transfer



NEW clean-out plates:

- ¼ inch thick solid steel plates
- Coated Woven Fiberglass reusable gasket
- Reusable - cleaning after cleaning

Backwards Compatible:

- Can use up to 50% Series 2 iron on a Series 1 block without consulting Weil-McLain – no need to stock both!

Standard Equipment

All Boilers:

- ASME 80 PSI rated cast iron sections
- Insulated steel jacket
- Power burner for light oil, gas or gas/light oil (except H-XX88)
- Burner mounting plate with refractory (except H-XX88)
- Cast iron flue collar with built-in breaching damper
- Observation ports on front and back sections
- Cleanout plates with reusable gaskets
- Flue brush
- HXT-bars
- 3 inches of insulation (except front panel)

Water Boilers

- 30 PSI ASME relief valve
- Combination high limit and low limit with manual reset control
- Combination pressure/temperature gauge
- Nipple and 5" x 6" reducing coupling (1288 – 1888 boilers only)
- Built-in air eliminator

Steam Boilers

- 15 PSI ASME safety valve side outlet
- Low limit and high limit pressure controls
- Steam pressure gauge siphon
- Gauge cocks, glass and guards

Optional Equipment

- Factory assembled sections
- Burner mounting plate with refractory for "H" units
- Intermediates with tankless heater opening
- Tankless heaters for domestic hot water (water or steam boilers)
- Tankless heater opening cover plates
- Low water cutoffs
- Barometric dampers
- Side inspection tappings with plugs – 2 per section
- Dual-range manometer
- Optional burners and burner controls



WEIL-McLAIN

www.weil-mclain.com

DESIGNED BY WEIL-McLAIN
© 2010 WEIL-McLAIN
© 2010

Clad in Cast Iron and Steel

Weil-McLain Commercial cast iron boilers are available as packaged, assembled blocks or as knockdowns with an array of approved burner options:

Beckett

 Gordon-Piatt



 **WEIL-McLAIN**

www.weil-mclain.com